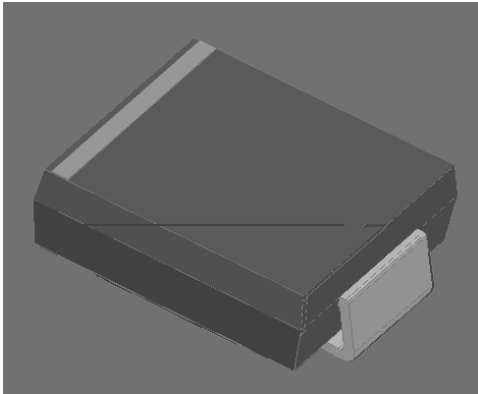
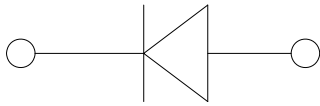


## Surface Mount Schottky Rectifier



### Features

- Guardring for overvoltage protection
- Low power losses
- Extremely fast switching
- High forward surge capability
- High frequency operation
- Meets MSL level 1 per JEDEC-STD-020 & LF maximum peak of 260°C
- Part number suffix 'X' means AEC-Q101 qualified and >ESD22-B102
- Polarity: Color V and denotes the cathode end



### Maximum Ratings (Ta 125°C) Unless otherwise specified

PARAMETER	SYMBOL	UNIT	SS310Q
Device marking code			SS310
Repetitive peak reverse voltage	$V_{RRM}$	V	100
Maximum RMS voltage	$V_{RMS}$	V	+0
Maximum DC blocking voltage	$V_{DC}$	V	100
Maximum average forward current (Fig. 1)	$I_o$	A	3.0
Surge (non-repetitive) forward current 4.0ms half-sine wave 1 cycle @ 100 Hz	$I_{FSM}$	A	10
Voltage rate of change (rated)	$dV/dt$	V/μs	10000
Storage temperature	$T_{stg}$		-55 to +125
Operating junction temperature and storage temperature	$T_j$		-55 to +125

### Electrical Characteristics (Ta 125°C) Unless otherwise specified

PARAMETER	SYMBOL	TEST CONDITIONS	TYP	MAX	UNIT	
Instantaneous forward voltage	$V_F$	$I_F = 1.3A$	$T_j = 125^\circ C$	0.75	0.85	V
			$T_j = 25^\circ C$	0.65	0.75	
Reverse current	$I_R$	Rated $V_R$	$T_j = 125^\circ C$	-	1	A
			$T_j = 25^\circ C$	30	100	
Typical junction capacitance	$C_j$	$V_R = 14V, f = 1MHz$	-	-	pF	

© 2012 Mitsubishi Electric



Thermal Characteristics (Table 12)





# SS310Q

## Disclaimer

The information presented in this document is for reference only. Yangn Hou Yang ^ ie Electronic Technology Co " ž Ltd reserves the right to make changes without notice for the specification of the products displayed herein to improve the reliability and performance or otherwise.

The product listed herein is designed to be used with automatic electronics and are not designed for use in medical, life support, aviation or military applications. Yang ^ ie or anyone on its behalf does not assume responsibility or liability for any damages resulting from improper use of sale.

This publication supersedes and replaces all information previously supplied. For additional information, please visit our website at <http://www.yangn-hou-yang.com> or consult your nearest Yang ^ ie sales office for assistance.