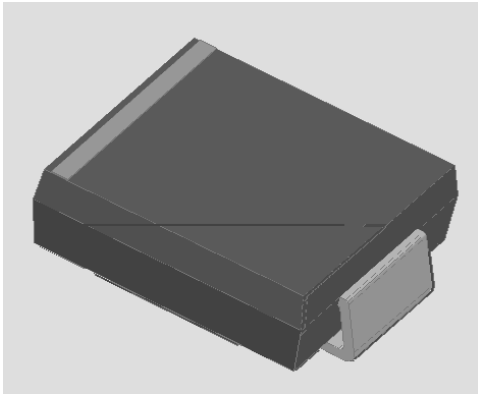


GifZUWY'Acibh'GW\chh_m'FYWhjZjYf'



:YUhfYg

Guardring for overvoltage protection

Low power losses

Extremely fast switching

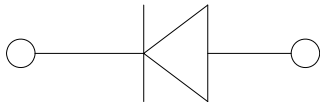
High forward surge capability

High frequency operation

Meets MSL level 1, per J-STD-020, LF maximum peak of 260 °C

Part no. with suffix "Q" means AEC-Q101 u 002 and JESD22-B102

Dc`Uf]hm. Color band denotes the cathode end



AUI]a ia 'FUh]b[g (Ta=25 Unless otherwise specified

D5F5A9H9F'	GMA6C@'	IB-H'	GG' * E'
Device marking code			SS36

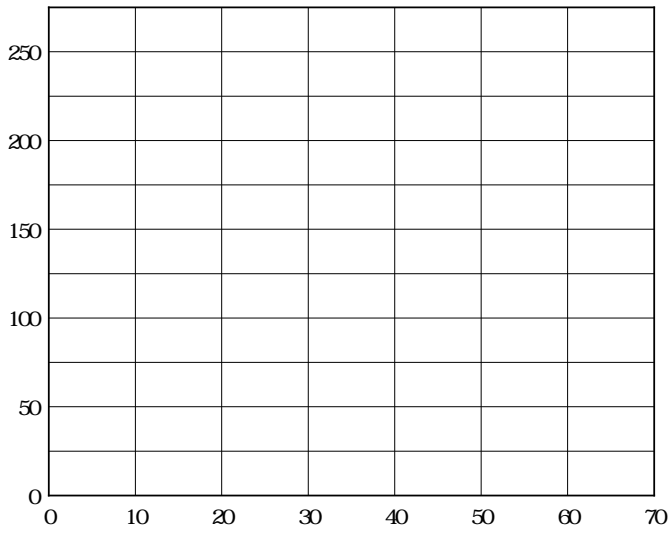
@60Hz half-sine wave, 1 cycle, T

$T_J=25$	I_{FSM}	A	80
Voltage rate of change (rated V_R)	dV/dt	V/ μ s	10000
Storage temperature	T_{sg}		-55 ~+ \pm E50
Junction temperature	T_J		-55 ~+ \pm E50

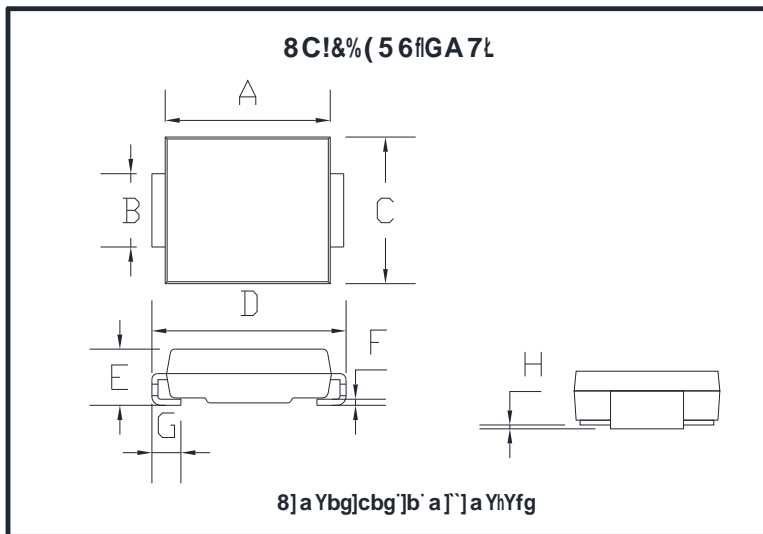
9`YWhf]WU`7 \UfUWhYf]gh]Wg Ta=25 Unless otherwise specified

D5F5A9H9F'	GMA6C@'	H9GH'7CB8-H-CBG'	HMD'	A5L'	IB-H'
Instantaneous forward voltage	V_F	$I_F=3A$	$T_J=25$	0.6	0.7
			$T_J=125$	0.54	0.63

	J	$V_R=4V, f=1MHz$	135	-	pF
--	-----	------------------	-----	---	----

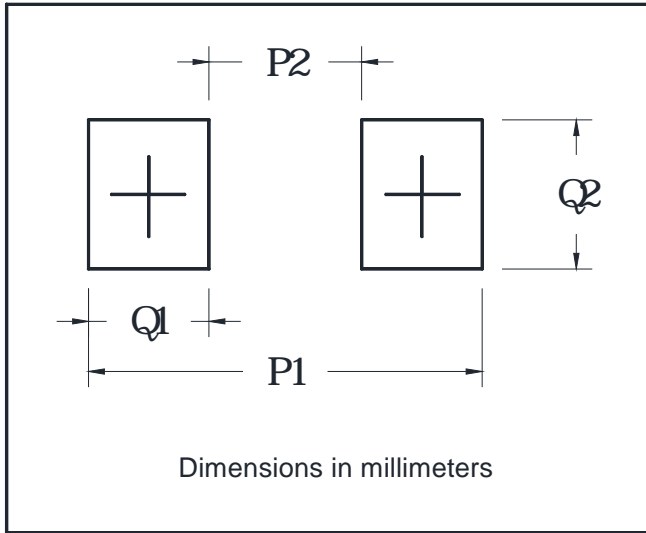


C i h`bY` 8] a Ybg]cbg`



DO-214AB (SMC)		
Dim	Min	Max
A	6.60	7.11
B	2.85	3.27
C	5.59	6.22
D	7.75	8.13
E	1.99	2.61
F	0.15	0.31
G	0.76	1.52
H	0.05	0.20

'Gi [[YghYX'dUX''Umc ih'



8]a'	Hmd'
P1	9.9
P2	3.84
Q1'	3.03
Q2'	3.82

CfXYf]b['-bZcf a Uh]cb'(Example)

DF9:9F98'D#B'	D57?5;9' 7C89'	IB-H'K9-; <Hfl[L'	A=B-A I A' D57?5;9fidWgt.'	CIH9F'75FHCB' E I 5BH=HMfidWgt.'	89@:-J9FM' AC89'
SS36Q	F1	Approximate 0.254	3000	42000	13" reel



'GG' * E'

8]gW'U]a Yf'

The information presented in this document is for reference only. Yangzhou Yangjie Electronic Technology Co., Ltd. reserves the right to make changes without notice for the specification of the products displayed herein to improve reliability, function or design
yya