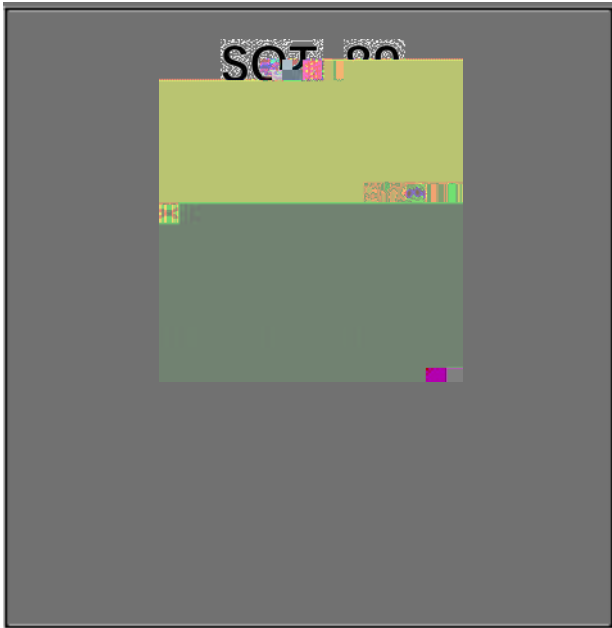


PNP General Purpose Amplifier



Features

- Epoxy meets UL-94 V-0 flammability rating
- Halogen free available upon request by adding suffix "HF"
- Moisture Sensitivity Level 1
- Low collector-emitter saturation voltage

Mechanical Data

- Package:** SOT-89
- Molding compound meets UL 94 V-0 flammability rating, RoHS-compliant, halogen-free
- Terminals:** Tin plated leads, solderable per J-STD-002 and JESD22-B102
- Marking:S48

Maximum Ratings (Ta=25 unless otherwise noted)

Item	Symbol	Unit	Conditions	Value
Minimum Collector-Emitter Voltage	V_{CEO}	V	$I_C=-10mA, I_B=0$	-40
Minimum Collector-Base Voltage	V_{CBO}	V	$I_C=-100\mu A, I_E=0$	-40
Minimum Emitter-Base Voltage	V_{EBO}	V	$I_E=-100\mu A, I_C=0$	-5
Collector Current	I_C	A		-2
Collector Power Dissipation	P_C	mW		500
Thermal Resistance From Junction To Ambient	R_{JA}	/W		250
Operation Junction Temperature	T_j			-55 to +150
Storage Temperature	T_{stg}			-55 to +150



PBSS5240X

Electrical Characteristics (Ta=25 unless otherwise noted)

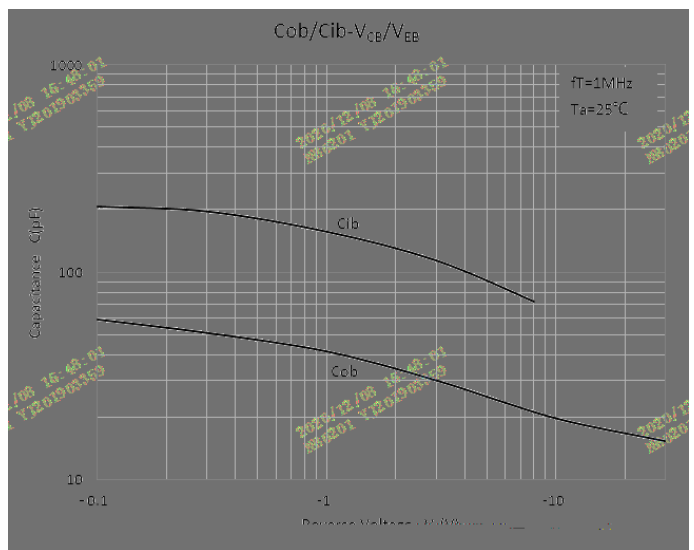
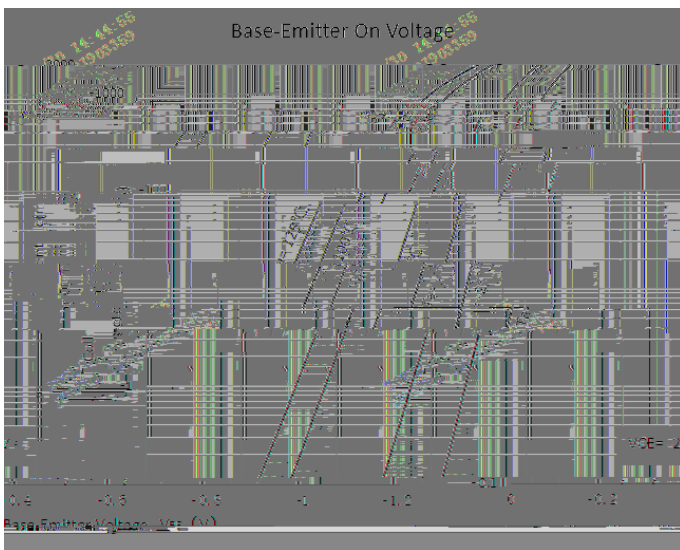
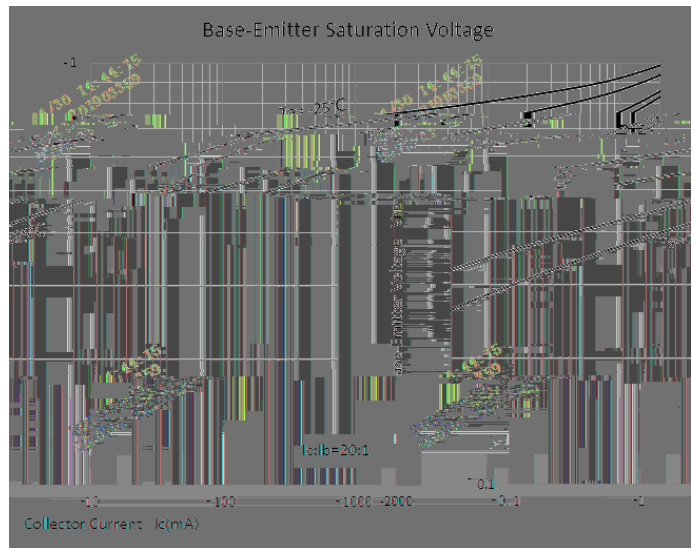
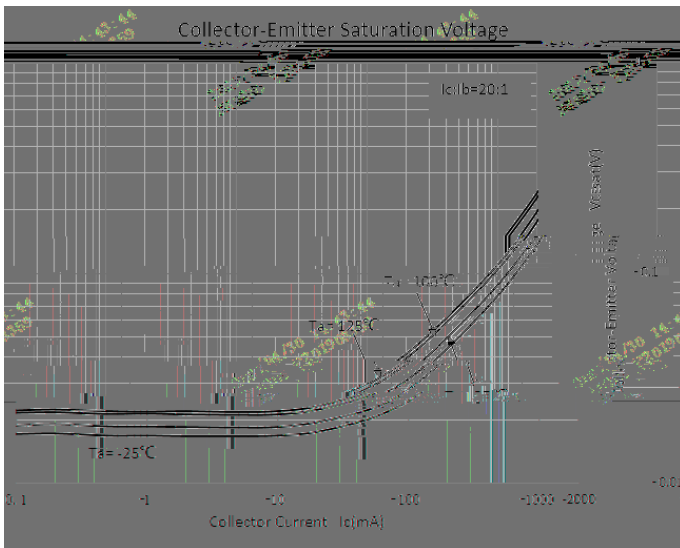
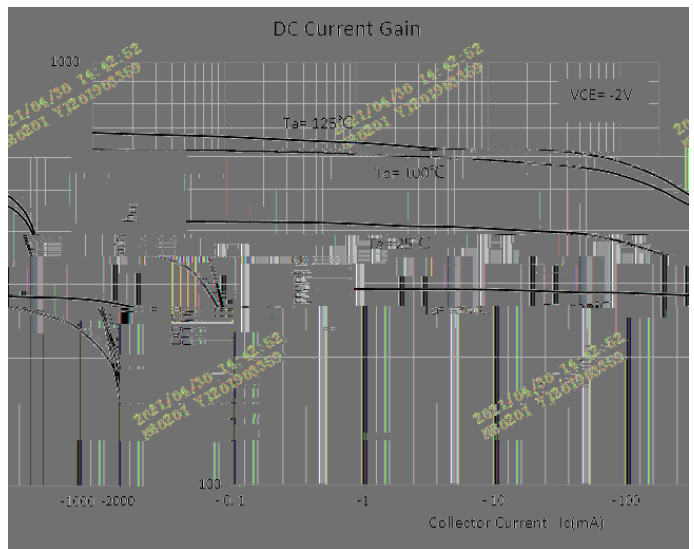
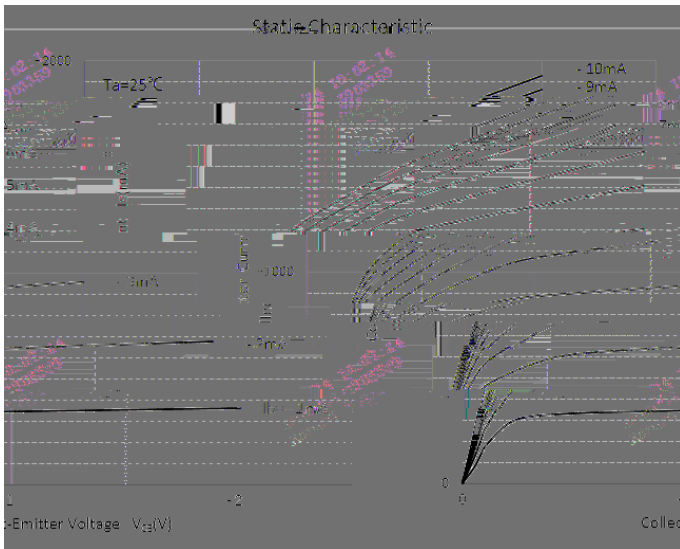
Item	Symbol	Unit	Conditions	Min	Max
Collector-Emitter Voltage	V_{CE0}	V	$I_C=-10mA, I_B=0$	-40	
Collector-Base Voltage	V_{CBO}	V	$I_C=-100\mu A, I_E=0$	-40	
Emitter-Base Voltage	V_{EBO}	V	$I_E=-100\mu A, I_C=0$	-5	
Collector-base Cut-off Current	I_{CBO}	nA	$V_{CB}=-40V$		-100
Collector-Emitter cut-off current	I_{CEO}	nA	$V_{CE}=-30V$		-100
Base-emitter Cut-off Current	I_{EBO}	nA	$V_{EB}=-5V$		-100
DC Current Gain	h_{FE}		$I_C=-1mA, V_{CE}=-5V$	300	
			$I_C=-500mA, V_{CE}=-5V$	215	
			$I_C=-1A, V_{CE}=-5V$	145	
			$I_C=-2A, V_{CE}=-5V$	55	
Collector-Emitter Saturation Voltage	$V_{CE(sat)1}$	mV	$I_C=-100mA, I_B=-5mA$		-140
	$V_{CE(sat)2}$	mV	$I_C=-500mA, I_B=-50mA$		-170
	$V_{CE(sat)3}$	mV	$I_C=-1A, I_B=-100mA$		-310
	$V_{CE(sat)4}$	mV	$I_C=-2A, I_B=-200mA$		-630
Equivalent On-Resistance	$R_{CE(sat)}$	m	$I_C=-1A, I_B=-100mA$		310
Base-Emitter Saturation Voltage	$V_{BE(sat)}$	V	$I_C=-1A, I_B=-100mA$		-1.2
Base-Emitter Turn-On Voltage	$V_{BE(on)}$	V	$I_C=-1A, V_{CE}=-5V$		-1.1
Transition frequency	f_T	MHz	$I_C=-100mA, V_{CE}=-10V, f=100MHz$	100	
Collector Capacitance	C_{ob}	pF	$V_{CB}=-10V, I_E=0, f=1MHz$		28

Ordering Information (Example)



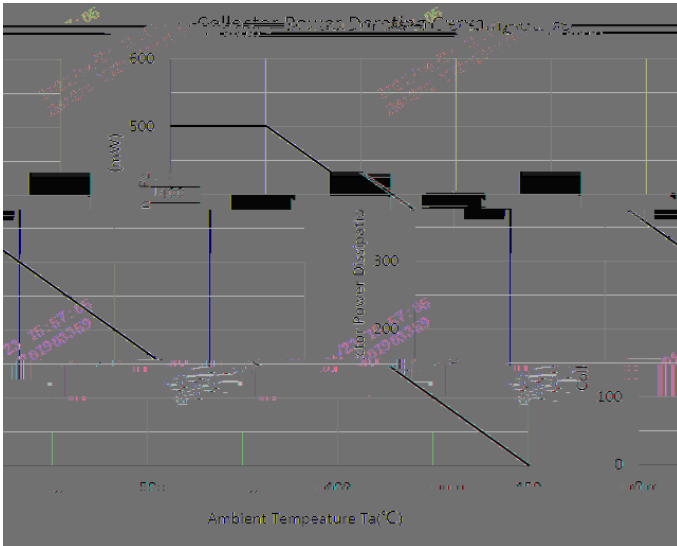
PBSS5240X

Characteristics (Typical)

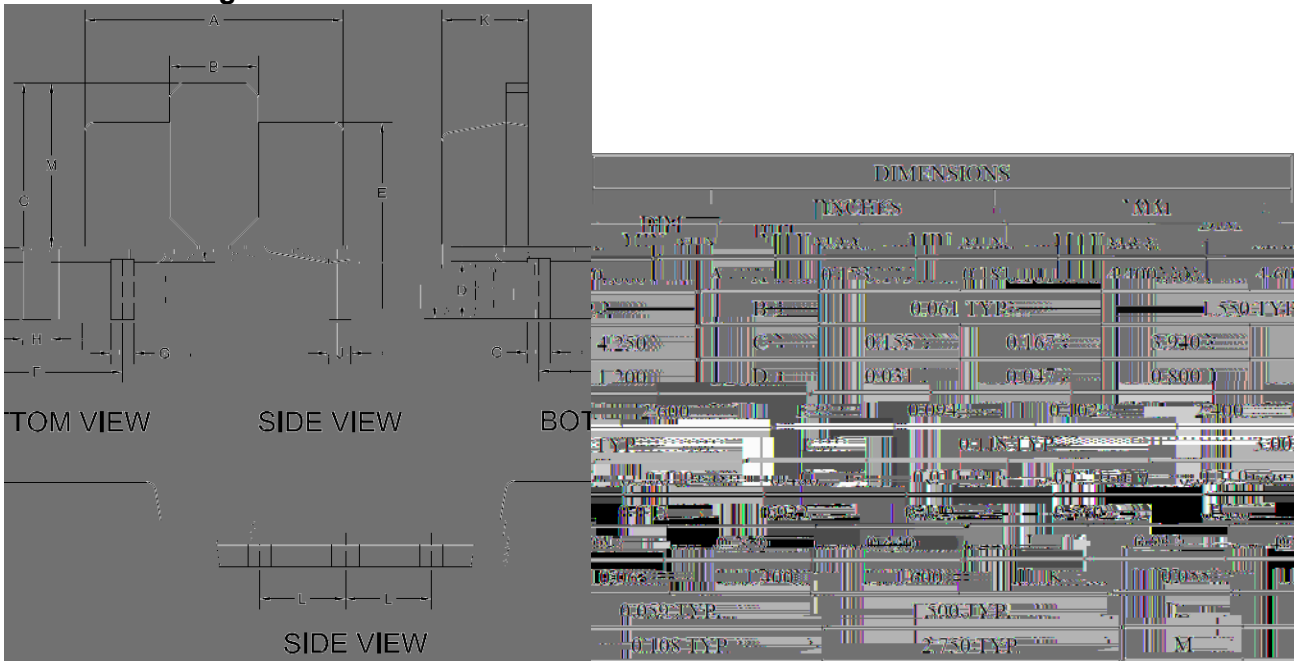




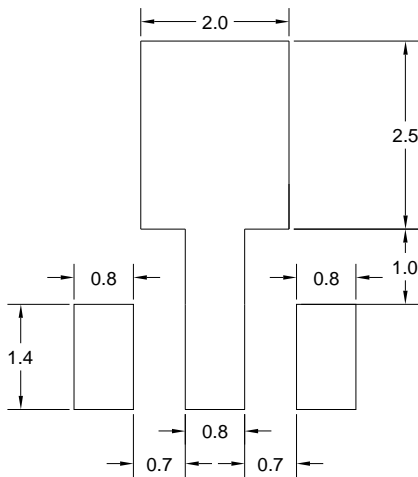
PBSS5240X



SOT-89 Package Outline Dimensions



SOT-89 Suggested Pad Layout



UNIT:MM



Disclaimer

The information presented in this document is for reference only. Yangzhou Yangjie Electronic Technology Co., Ltd. reserves the right to modify the product specifications without notice.