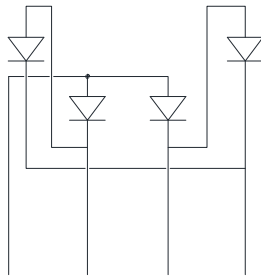
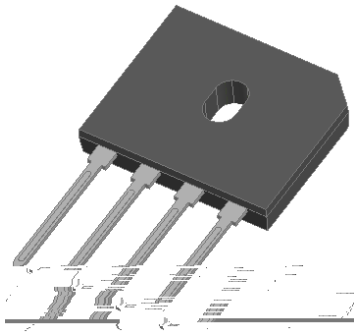


Low VF Bridge Rectifiers



Features

- UL recognition, file #E230084
- Glass passivated chip junction
- Ideal for printed circuit boards
- High surge current capability
- Low VF
- Solder dip 275 °C max. 7 s, per JESD 22-B106

Typical Applications

General purpose use in AC/DC bridge full wave rectification for monitor, TV, printer, power supply, switching mode power supply, adapter, audio equipment, and home appliances applications.

Mechanical Data

- Package:** GBU
- Molding compound meets UL 94 V-0 flammability rating, RoHS-compliant
- Terminals:** Tin plated leads, solderable per J-STD-002 and JESD22-B102
- Pola**

	Without heatsink Ta =25			3.6
Forward Surge Current (Non-repetitive) @60Hz Half-sine wave, 1 cycle, Tj=25		IFSM	A	220
Forward Surge Current (Non-repetitive) @ 1ms, square wave, 1 cycle, Tj=25				440
Current squared time @ 1ms t 8.3ms Tj=25 , Rating of per diode		I ² t	A ² S	200
Storage temperature		Tstg		-55 ~ +150
Junction temperature		Tj		-55 ~ +150
Dielectric strength @ Terminals to case, AC 1 minute		Vdis	KV	2.5
Mounting torque @Recommend torque 5kg cm		Tor	kg cm	8

Electrical Characteristics Ta=25 Unless otherwise specified

PARAMETER	SYMBOL	UNIT	TEST CONDITIONS	GBUL1008A
Maximum instantaneous forward voltage drop per diode	VF	V	IFM=5.0A	0.92
Maximum DC reverse current at rated DC blocking voltage per diode	IR	μA	Tj =25	5
			Tj =125	100
Typical junction capacitance	Cj	pF	Measured at 1MHz and Applied Reverse Voltage of 4.0 V.D.C	110



GBUL1008A

Thermal Characteristics $T_a=25$ Unless otherwise specified

PARAMETER		SYMBOL	UNIT	GBUL1008A
Thermal Resistance	Between junction and ambient, Without heatsink	R J-A	/W	25
	Between junction and case, With heatsink	R J-C		2

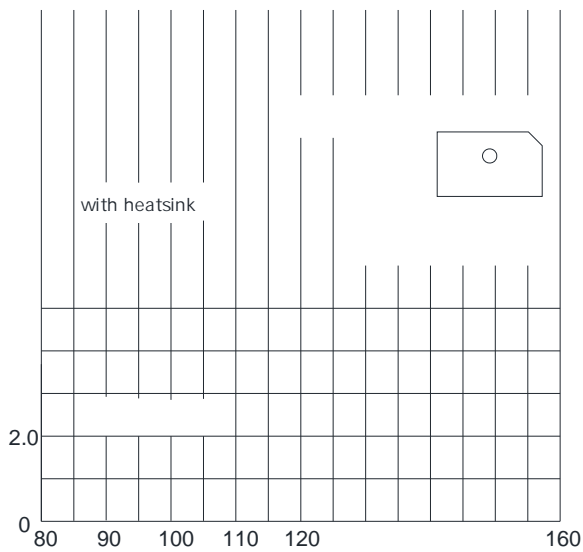
Note: Device mounted on 75mm x 45mm x 5.5mm Aluminum Plate Heatsink.

Ordering Information (Example)

PREFERRED P/N	PACKING CODE	UNIT WEIGHT(g)	MINIIMUM PACKAGE(pcs)	INNER BOX QUANTITY(pcs)	OUTER CARTON QUANTITY(pcs)	DELIVERY MODE
GBUL1008A	B1	Approximate 3.97	20	1000	2000	TUBE

Characteristics (Typical)

FIG1:Io-Tc Curve





Outline Dimensions



Dimensions in millimeters

GBU		
Dim	Min	Max
A	21.80	22.30
B	18.30	18.80
C	17.50	18.00
D	3.50	4.10
E	7.40	7.90
F	1.65	2.16
G	1.91	2.54
H	2.06	2.54
I	1.02	1.27
J	4.83	5.33
K	3.30	3.56
L	2.40	2.66
M	0.46	0.56



Disclaimer

The information presented in this document is for reference only. Yangzhou Yangjie Electronic Technology Co., Ltd. reserves the right to make changes without notice for the specification of the products displayed herein to improve reliability, function or design or otherwise.

The product listed herein is designed to be used with ordinary electronic equipment or devices, and not designed to be used with equipment or devices which require high level of reliability and the malfunction of which would directly endanger human life (such as medical instruments, transportation equipment, aerospace machinery, nuclear-reactor controllers, fuel controllers and other safety devices), Yangjie or anyone on its behalf, assumes no responsibility or liability for any damages resulting from such improper use of sale.

This publication supersedes & replaces all information previously supplied. For additional information, please visit our website