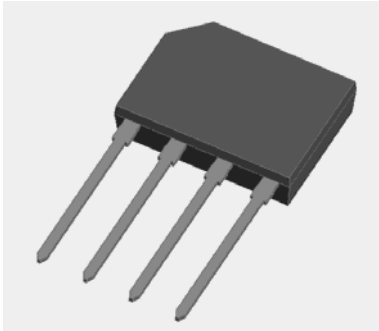




# RGBP410A

## Fast Recovery Bridge Rectifiers



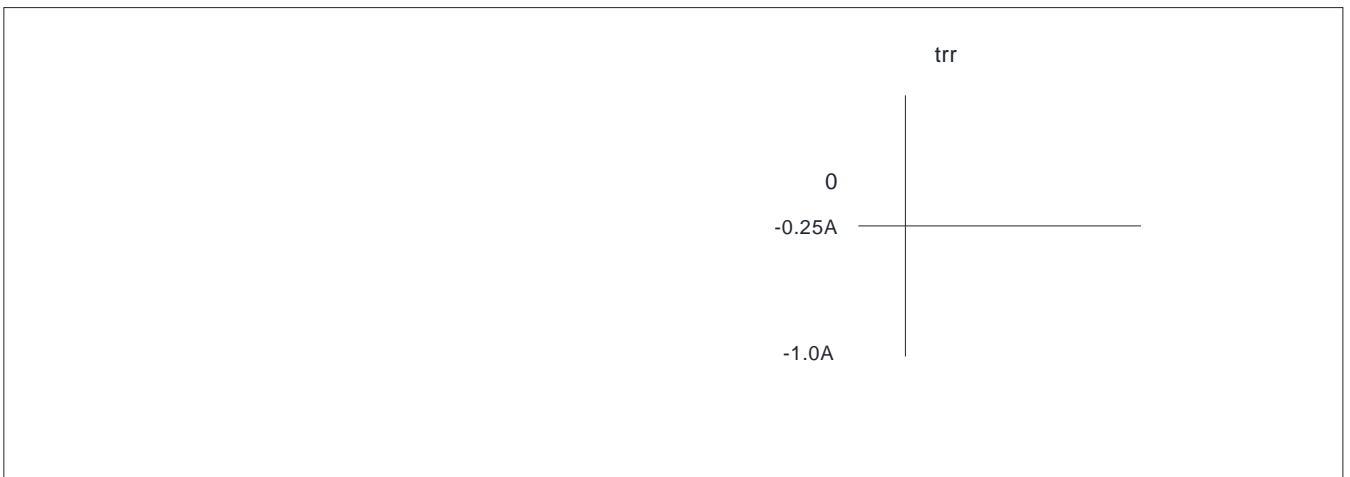
### Maximum Ratings ( $T_a=25$ Unless otherwise specified)

| PARAMETER  | SYMBOL                         | UNIT             | RGBP410A   |     |
|--|--------------------------------|------------------|------------|-----|
| Device marking code  |                                |                  | RGBP410A   |     |
| Maximum Repetitive Peak Reverse Voltage  | VRRM                           | V                | 1000       |     |
| Maximum RMS Voltage  | VRMS                           | V                | 700        |     |
| Maximum DC blocking Voltage  | VDC                            | V                | 1000       |     |
| Average rectified output current @60Hz sine wave, R-load                         | With heatsink<br>$T_c=125$ -   | IO               | A          | 4.0 |
|  | Without heatsink<br>$T_a=25$ - |                  |            | 1.2 |
| Forward Surge Current (Non-repetitive) @60Hz Half-sine wave, 1 cycle, $T_j=25$ - | IFSM                           | A                | 130        |     |
| Forward Surge Current (Non-repetitive) @1ms, square wave, 1 cycle, $T_j=25$ -    |                                |                  | 260        |     |
| Current squared time @1ms t 8.3ms $T_j=25$ - , Rating of per diode               | $I^2t$                         | A <sup>2</sup> s | 70.2       |     |
| Dielectric strength @ terminals to case, AC 1 minute                             | Vdis                           | KV               | 2          |     |
| Storage temperature  | Tstg                           | -                | -55 ~ +150 |     |

T Junction -55 ~ +150 S

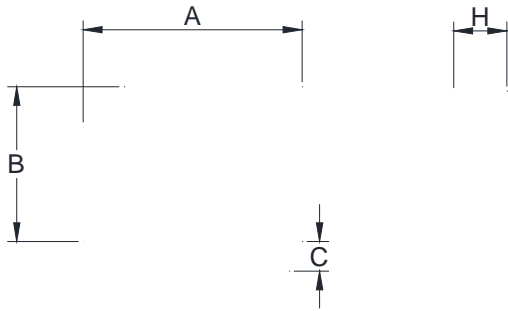


FIG.5: Diagram of circuit and Testing wave form of reverse recovery time





## Outline Dimensions



| GBP |       |       |
|-----|-------|-------|
| Dim | Min   | Max   |
| A   | 14.25 | 14.75 |
| B   | 10.10 | 10.60 |
| C   | 1.80  | 2.20  |
| D   | 14.25 | 14.73 |
| E   | 1.22  | 1.42  |
| F   | 0.76  | 0.86  |
| G   | 3.70  | 3.90  |
| H   | 3.35  | 3.65  |
| I   | 0.80  | 1.10  |
| J   | 0.35  | 0.55  |

11



## Disclaimer

The information presented in this document is for reference only. Yangzhou Yangjie Electronic Technology Co., Ltd. reserves the right to make changes without notice to the specification of the products displayed here in order to improve reliability, functionality, design or otherwise.

The product listed here is designed to be used with ordinary electronic equipment or devices, and not designed to be used with equipment or devices which require a high level of reliability. A malfunction of the product could directly endanger human life (such as medical instruments, transportation equipment, aerospace machinery, nuclear-reactor controllers, fuel controllers and safety-critical devices) or any other safety-critical system. Yangjie or any of its subsidiaries is not responsible for any damages resulting from such improper use of sale.

This publication does not constitute an offer of any financial product. For additional information, please visit our website at <http://www.21yangjie.com>, or consult our nearest Yangjie's sales office for further assistance.