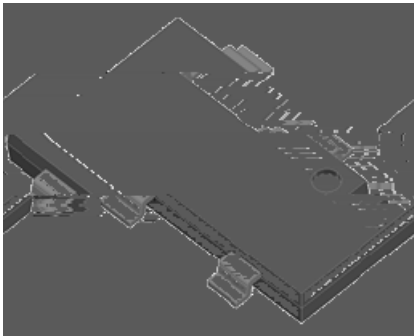


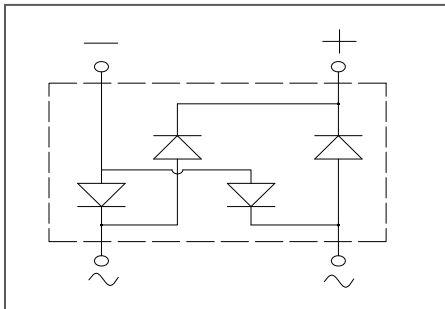
Bridge Rectifiers



UL recognition, file sE313149
 Glass passivated chip junction
 Ideal for automated placement
 High surge current capability
 Meets MSL level 1, per J-STD-020, LF maximum peak of 260 °C

Typical Applications

General purpose use in AC/DC bridge full wave rectification for SMPS, lighting ballaster, adapter, battery charger, home p appliances, office equipment, and telecommunication applications.



Mechanical Data

Package: YBS3
 Molding compound meets UL 94 V-0 flammability rating, RoHS-compliant, Halogen-free
Terminals: Tin plated leads, solderable per J-STD-002 and JESD22-B102
Polarity: As marked on body

Maximum Ratings ($T_a=25$ Unless otherwise specified)

PARAMETER	SYMBOL	UNIT	YBSM4010T
Device marking code			YBSM4010T
Maximum Repetitive Peak Reverse Voltage	VRRM	V	1300
Maximum RMS Voltage	VRMS	V	910
Maximum DC blocking Voltage	VDC	V	1300
Average rectified output current @60Hz sine wave, R-load, $T_c=100$	IO	A	4.0
Forward Surge Current (Non-repetitive) @60Hz Half-sine wave, 1 cycle, $T_j=25$	IFSM	A	120
Forward Surge Current (Non-repetitive) @1ms, square wave, 1 cycle, $T_j=25$			240
Current squared time @1ms t 8.3ms $T_j=25$ Rating of per diode	I^2t	A ² s	59.8
Storage temperature	T_{stg}		-55 ~ +150
Junction temperature	T_j		-55 ~ +150

Electrical Characteristics $T_a=25$ Unless otherwise specified

PARAMETER	SYMBOL	UNIT	TEST CONDITIONS	YBSM4010T
Maximum instantaneous forward voltage drop per diode	VF	V	$I_{FM}=2.0A$	1.0
Maximum DC reverse current at rated DC blocking voltage per diode	IR	μA	$T_j=25$	5
			$T_j=125$	100
Typical junction capacitance	Cj	pF	Measured at 1MHz and Applied Reverse Voltage of 4.0 V.D.C	34



YBSM4010T

Thermal Characteristics $T_a=25$ Unless otherwise specified

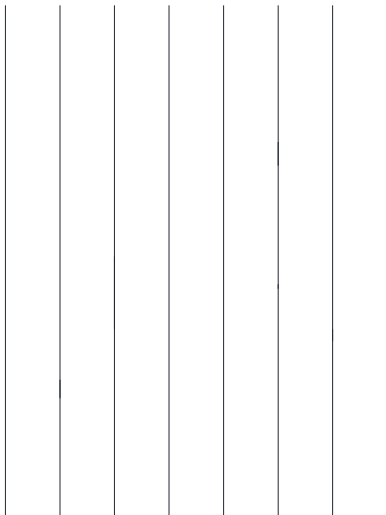
PARAMETER		SYMBOL	UNIT	YBSM4010T
Typical Thermal Resistance	Between Junction and Ambient	R_{J-A}	/W	55
	Between Junction and Lead	R_{J-L}		15
	Between Junction and Case	R_{J-C}		7

Note: Device mounted on P.C.B with 35mm*25mm*1.7mm.

Ordering Information (Example)

PREFERRED P/N	PACKING CODE	UNIT WEIGHT(g)	MINIIMUM PACKAGE(pcs)	INNER BOX QUANTITY(pcs)	OUTER CARTON QUANTITY(pcs)	DELIVERY MODE
YBSM4010T	F1	Approximate 0.35	1800	3600	25200	13" Reel

Characteristics (Typical)

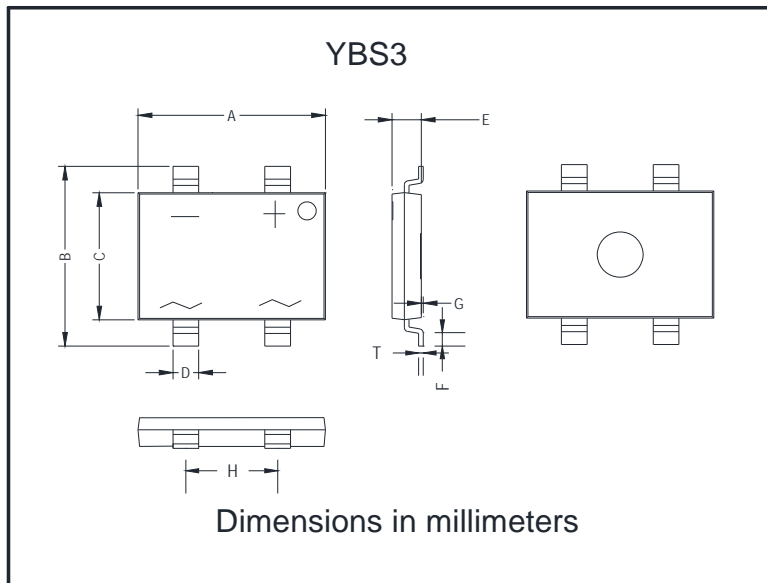


S t

1.6

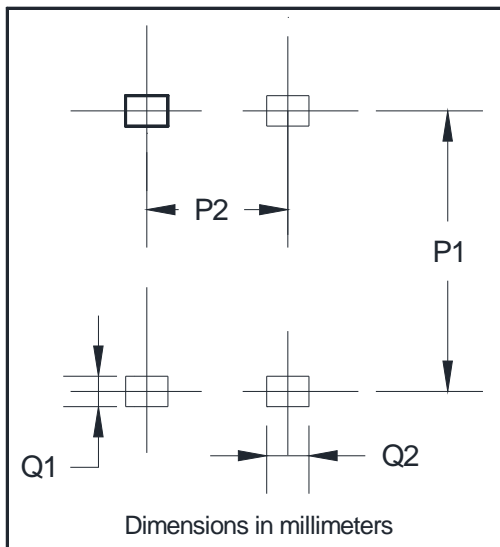


Outline Dimensions



YBS3		
Dim	Min	Max
A	10.00	10.40
B	9.70	10.10
C	6.80	7.20
D	1.3	1.5
E	1.4	1.8
F	0.5	1.1
G	0	0.15
H	4.9	5.1
T	0.20	0.30

Suggested pad layout



YBS3	
Dim	Min
P1	9.25
P2	5.00
Q1	1.00
Q2	1.5



YBSM4010T

Disclaimer

The information presented in this document is for reference only. Yangzhou Yangjie Electronic Technology Co., Ltd. reserves the right to make changes without notice for the specification of the products displayed herein to improve reliability, function or design or otherwise.

The product listed herein is designed to be used with ordinary electronic equipment or devices, and not designed to be used with equipment or devices which require high level of reliability and the malfunction of which would directly endanger human life (such as medical instruments, transportation equipment, aerospace machinery, nuclear-reactor controllers, fuel controllers and other safety devices), Yangjie or anyone on its behalf, assumes no responsibility.