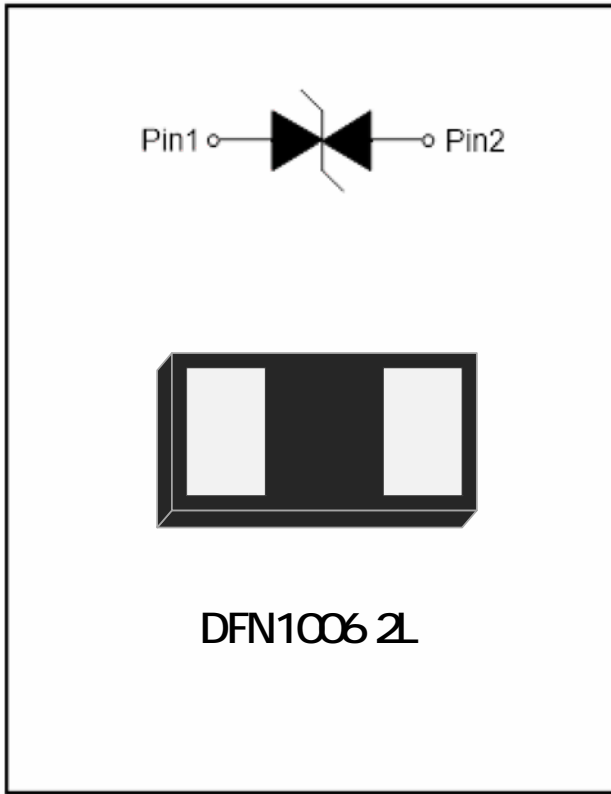


1-Line, Bi-directional, Transient Voltage Suppressor



Features

- Bidirectional protection
- Low leakage current
- Low clamping voltage
- Low peak pulse current

Applications

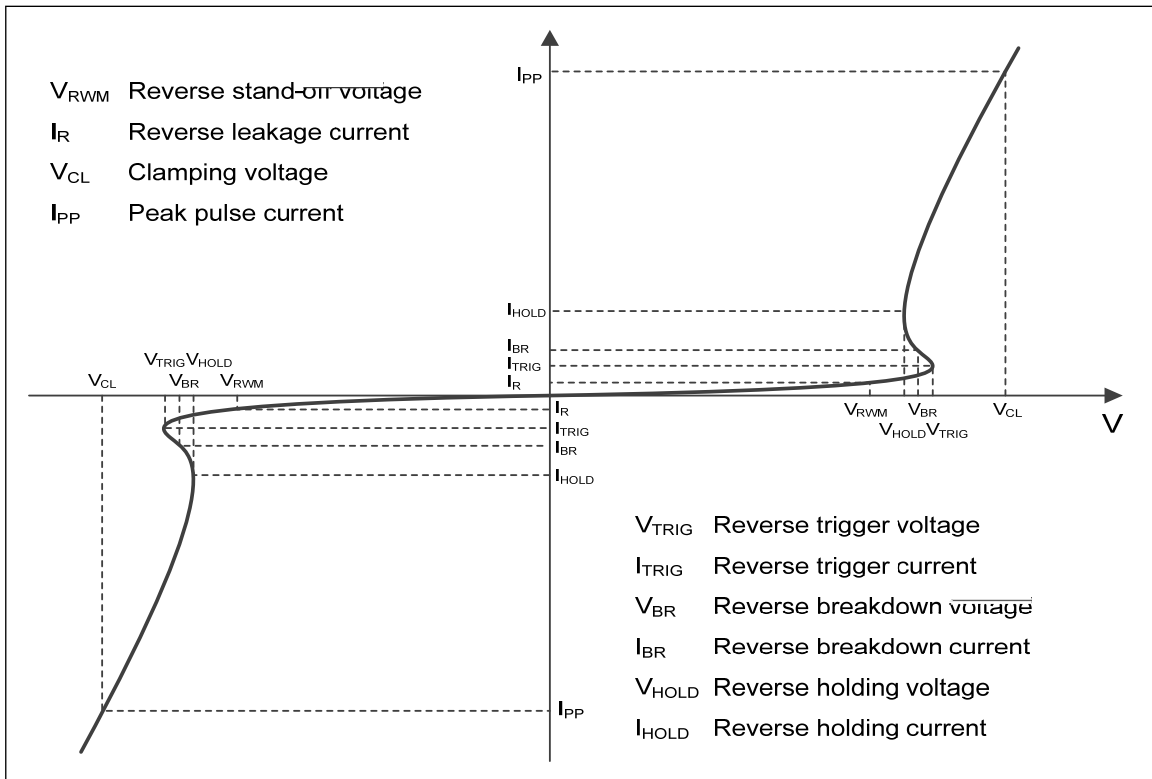
- Data lines
- Power lines
- Signal lines
- Control lines

Mechanical Data

- Package: DFN1006 2L
- Dimensions: 1.0mm x 0.6mm x 0.2mm
- Lead length: 0.1mm



Definitions of electrical characteristics



Characteristics (Typical)

Fig.1 8/20μs waveform per IEC61000-4-5

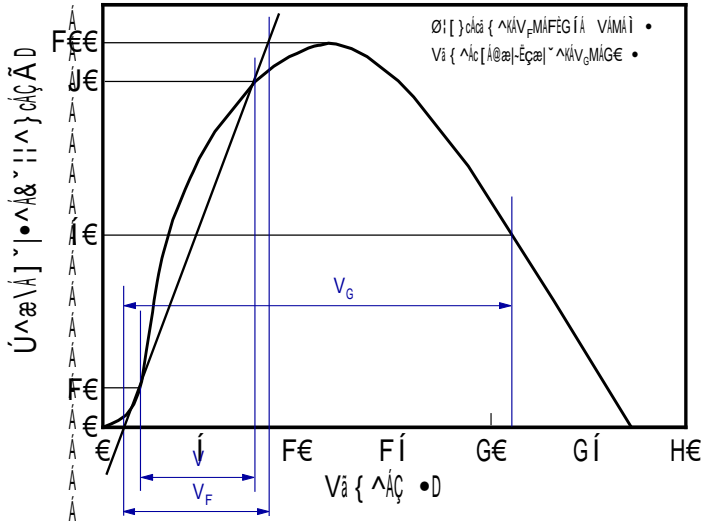
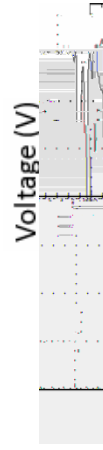
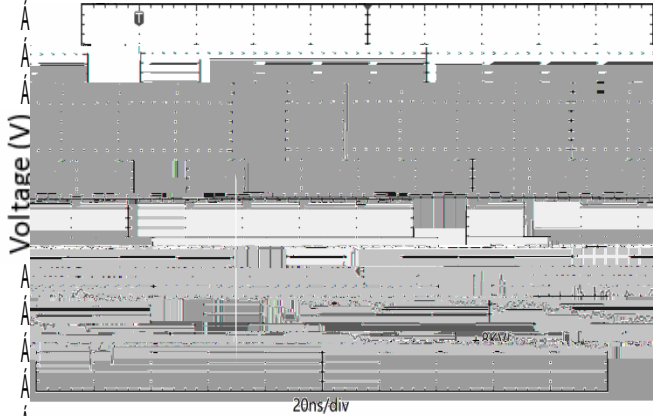


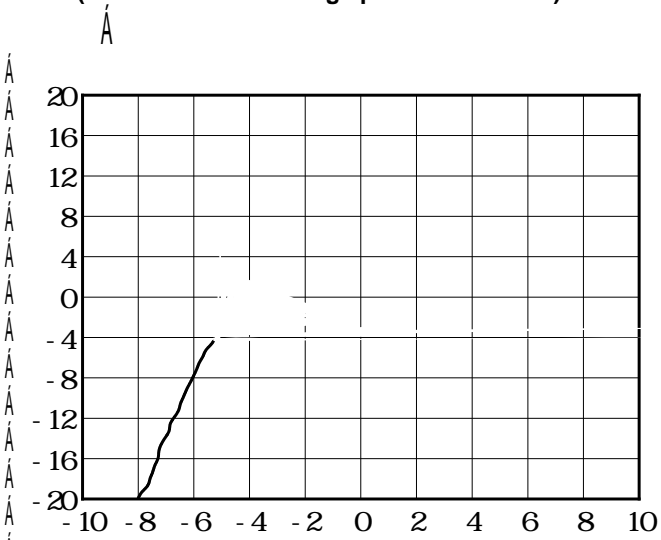


Fig.7 ESD clamping



Time (ns)

(+8kV contact discharge per IEC61000-4-2)





Á

Disclaimer

Á

Ÿ@^Áä)-[! { æcä [} Á] ! ^•^ } c^ä

[Ä