





# ESDLC15VLZB

## Absolute Maximum Ratings (Ta=25°C unless otherwise specified)

PARAMETER	SYMBOL	Rating	UNIT
Peak pulse power ( $t_p = 8/20\mu s$ )	$P_{pk}$	140	W
Peak pulse current ( $t_p = 8/20\mu s$ )	$I_{PP}$	6	A
ESD according to IEC61000-4-2 air discharge	$V_{ESD}$	$\pm 30$	KV
ESD according to IEC61000-4-2 contact discharge		$\pm 30$	KV
Junction temperature	$T_J$	125	°C
Operating temperature	$T_{OP}$	-40~85	°C
Storage temperature	$T_{STG}$	-55~150	°C

## Electrical Characteristics (Ta=25 Unless otherwise specified)

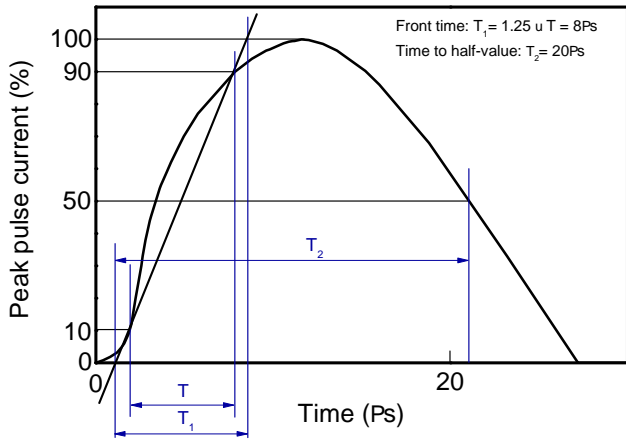
PARAMETER	Symbol	UNIT	Conditions	Min	Typ	Max
Reverse maximum working voltage	$V_{RWM}$	V				$\pm 15$
Reverse leakage current	$I_R$	nA	$V_{RWM} = 15V$			100
Reverse breakdown voltage	$V_{BR}$	V	$I_{BR} = 1mA$	15.5		20
Reverse holding voltage	$V_{HOLD}$	V	$I_{HOLD} = 50mA$	15.5		20
Clamping voltage <sup>1)</sup>	$V_{CL}$	V	$I_{PP} = 16A, t_p = 100ns$		21.0	
Dynamic resistance <sup>1)</sup>	$R_{DYN}$				0.35	
Clamping voltage <sup>2)</sup>	$V_{CL}$	V	$V_{ESD} = 8kV$		21.0	
Clamping voltage <sup>3)</sup>	$V_{CL}$	V	$I_{PP} = 1A, t_p = 8/20\mu s$		16	18
		V	$I_{PP} = 6A, t$			



# ESDLC15VLZB

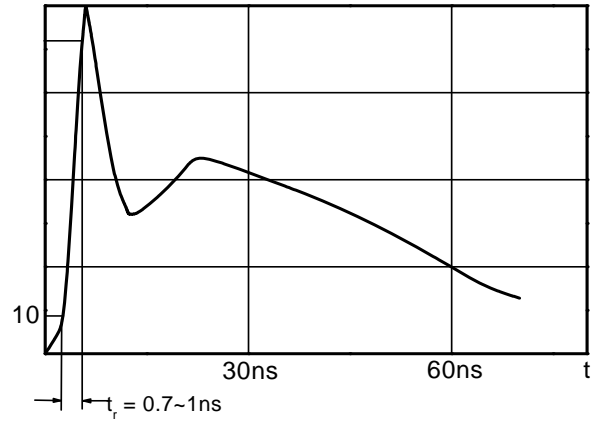
## Typical Performance Characteristics (Ta=25 unless otherwise Specified)

8/20 $\mu$ s waveform per IEC61000 4 5



Clamping voltage vs. Peak pulse current

Contact discharge current waveform per IEC61000 4 2



Capacitance vs. Reverse voltage

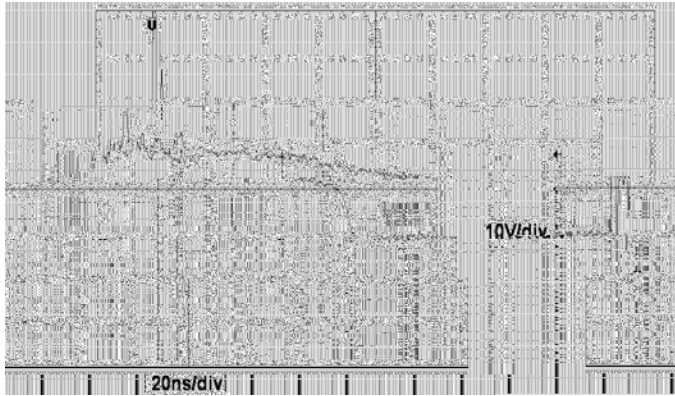
Non repetitive peak pulse power vs. Pulse time

Power derating vs. Ambient temperature



# ESDLC15VLZB

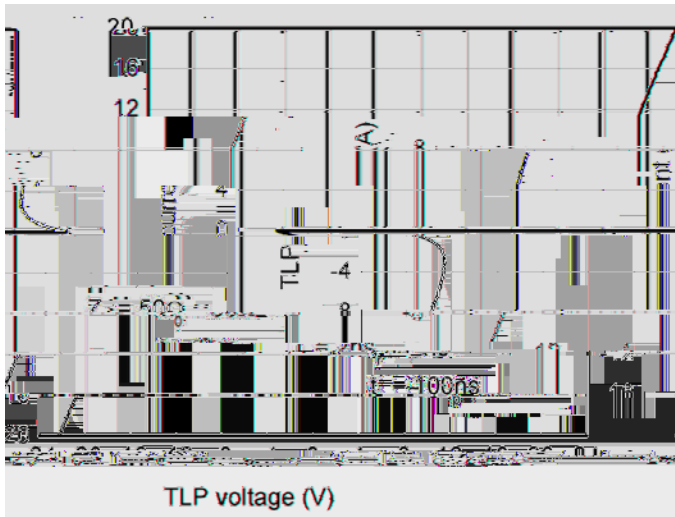
ESD clamping  
(+8kV contact discharge per IEC61000 4 2)



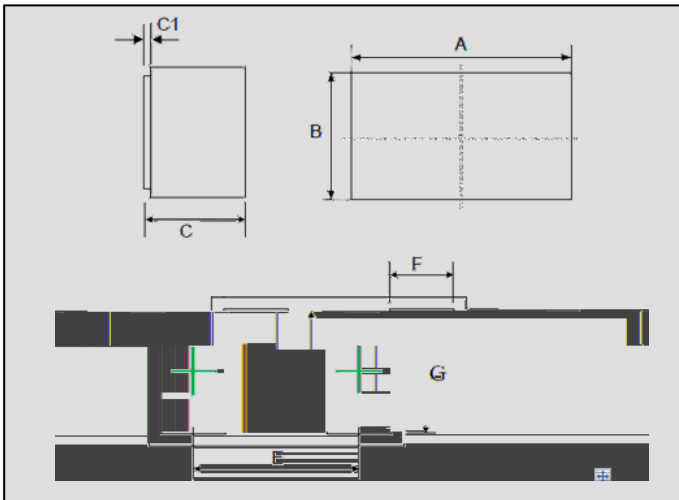
ESD clamping  
( 8kV contact discharge per IEC61000 4 2)



TLP Measurement



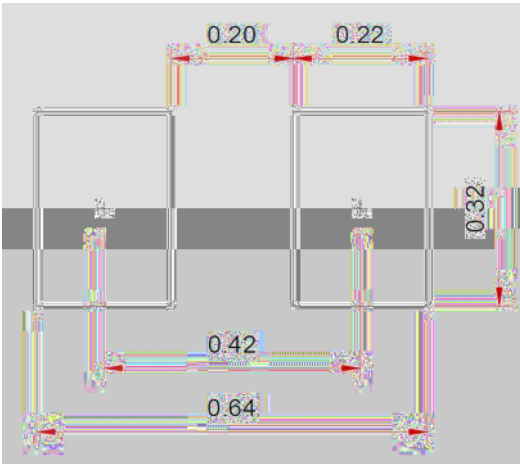
## Outline Dimensions



Symbol	min (mm)	Max. (mm)
A	0.55	0.67
B	0.25	0.37
C	0.23	0.35
C1		0.05
E		0.4
F	0.100	0.205
G	0.200	0.295



Recommend land pattern (Unit:mm)





## ESDLC15VLZB

---

### Disclaimer

The information presented in this document is for reference only. Yangzhou Yangjie Electronic Technology Co., Ltd. reserves the right to make changes without notice for the specification of the products displayed herein to improve reliability, function or design or otherwise.

The product listed herein is designed to be used with ordinary electronic equipment or devices, and not designed to be used with equipment or devices which require high level of reliability and the malfunction of which would directly endanger human life (such as medical instruments, transportation equipment, aerospace machinery, nuclear-reactor controllers, fuel controllers and other safety devices), Yangjie or anyone on its behalf, assumes no responsibility or liability for any damages resulting from such improper use of sale.

This publication supersedes & replaces all information previously supplied. For additional information, please visit our website [http:// www.21yangjie.com](http://www.21yangjie.com) , or consult your nearest Yangjie's sales office for further assistance.