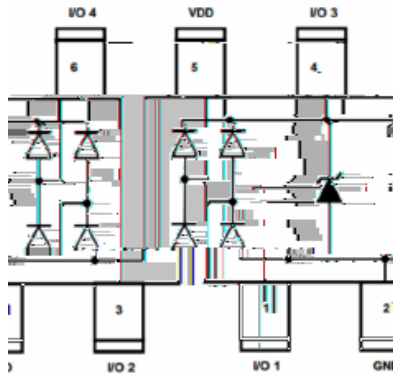




4-Line, Uni-directional, low Capacitance TVS Diode Array

Features



Applications

Mechanical Characteristics





ESDSL3304S2

Absolute Maximum Ratings

PARAMETER	SYMBOL	Rating	UNIT

Electrical Characteristics

	PARAMETER	Symbol	UNIT	Conditions	Min	Typ	Max

Typical Performance Characteristics

Fig.1 8/20 μ s waveform per IEC61000-4-5

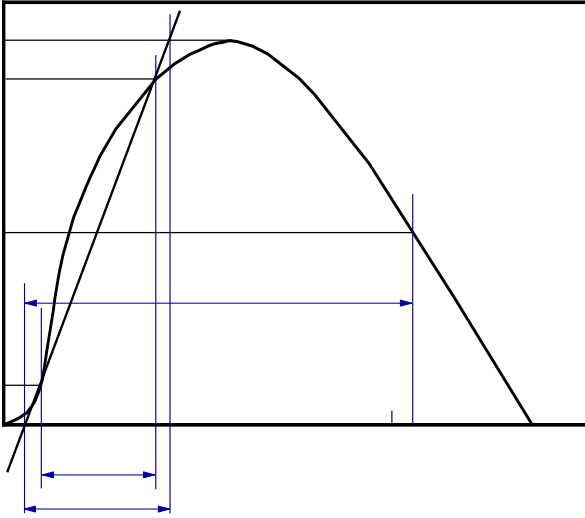
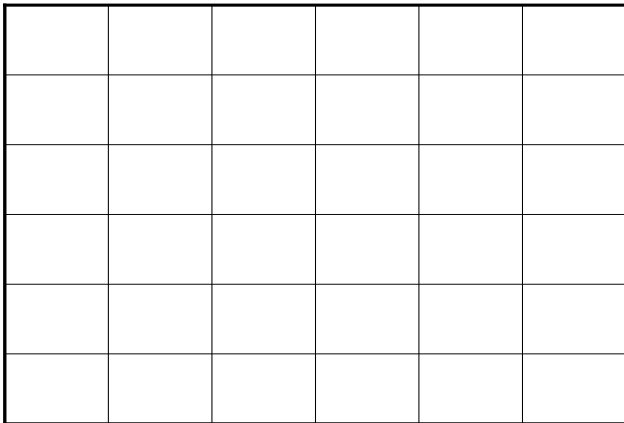
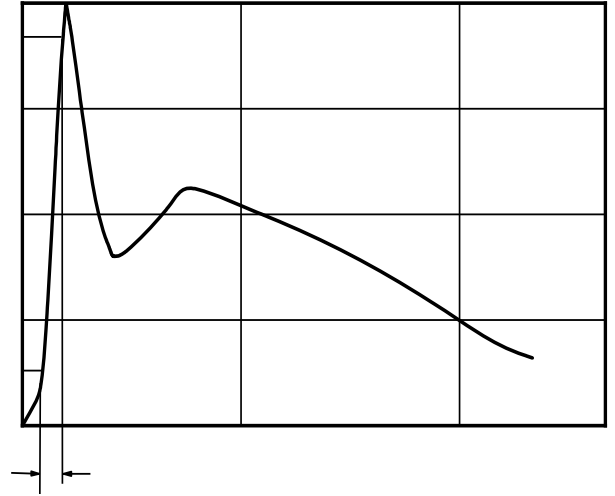


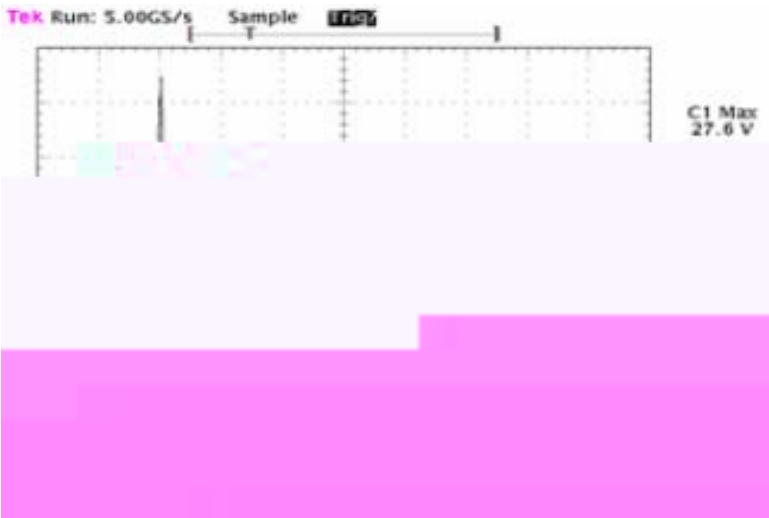
Fig.2 Contact discharge current waveform per IEC61000-4-2



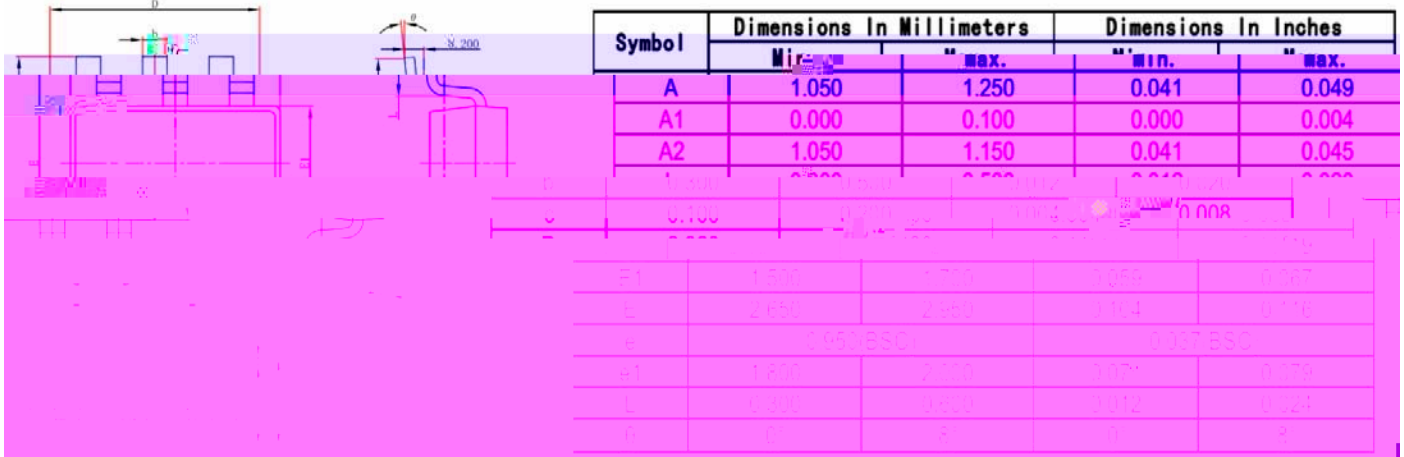


ESDSL3304S2

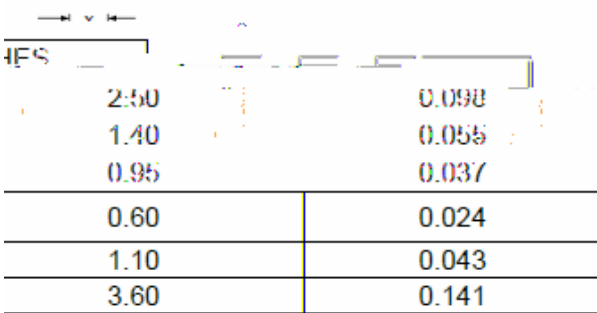
Fig.7 ESD clamping - I/O to GND
 (+8kV contact discharge per IEC61000-4-2)



SOT-23 6L Package Outline Drawing



Recommended PCB Layout





Disclaimer