



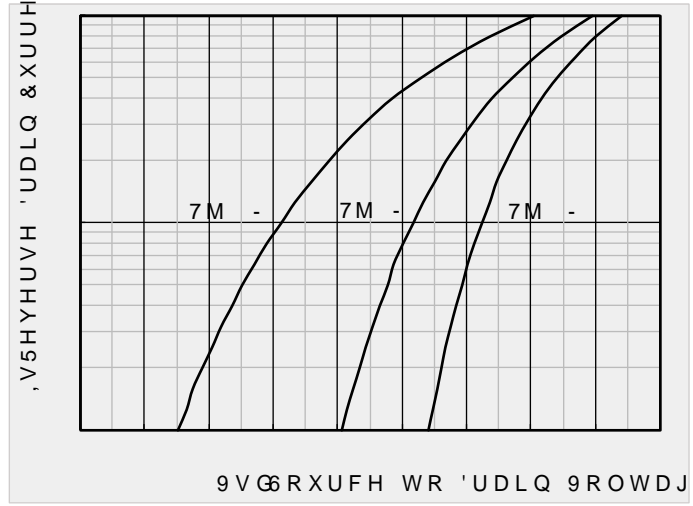
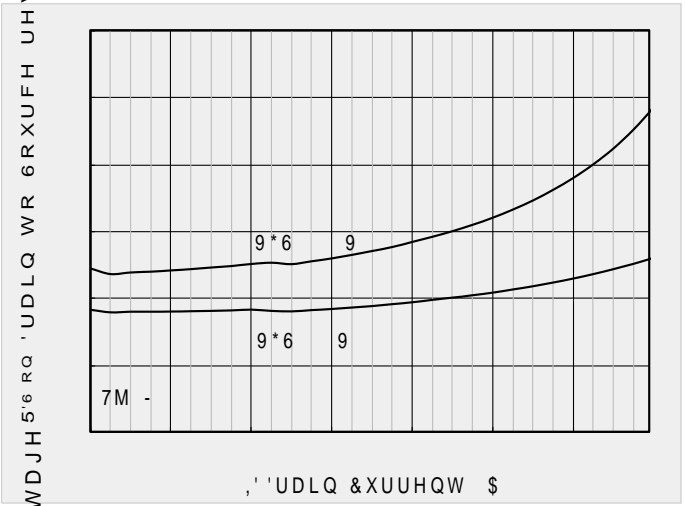


v(OHFWULFDO & KDUDFWXUDLWLRWLRKHUZZLVH QRWHG

3DUDPHWHU	6\PERC	&RQGLWLRQV	0LQ	7\S	0D[	8QLWV
6WDWLF 3DUDPHWHU						
'UDLQ 6RXUFH %UHDNGRZQ 9ROWDJH		9.6 9.9 \$	9			9
=HUR *DWH 9ROWDJH 'UDLQ &XUHQW		9.6 9.9 9	9			\$
*DWH %RG\ /HDNDJH &XUHQW		9.6 " 9.9 9	9		"	Q \$
*DWH 7KUHVKROG 9ROWDJH		9.6 WK	9			9
6WDWLF 'UDLQ 6RXUFH 2Q 5HVLVWDQFH		9.6 9.9 \$				P
'LRGH )RUZDUG 9ROWDJH		9.6 \$ .9 9				\$
*DWH UHVLVWDQFH		5   0+]				
0D[LPXP %RG\ 'LRGH &RQWLQXRXV &XUHQW						\$
'\QDPLF 3DUDPHWHUV						
,QSW &DSDFLWDQFH	LVV	&				
2XWSXW &DSDFLWDQFH	RVV	9.6 & 9.9 9   0+]				S)
5HYHUVH 7UDQVIHU &DSDFLWDQFH		&				
6ZLWFKLQJ 3DUDPHWHUV						
7RWDO *DWH &KDUJH	J	4				
*DWH 6RXUFH &KDUJH	JV	9.6 9.9 9.9 \$				Q &
*DWH 'UDLQ &KDUJH	JG	4				
5HYHUVH 5HFRYHU\ &KDUJH	UU	4				Q &
5HYHUVH 5HFRYHU\ 7LPH	UU	W				Q V
7XUQ RQ 'HOD\ 7LPH	'RQ	W				
7XUQ RQ 5LVH 7LPH	U	W 9.6 9.9 9.9 \$				Q V
7XUQ RII 'HOD\ 7LPH	'RII	W 5.1				
7XUQ RII IDOO 7LPH	I	W				

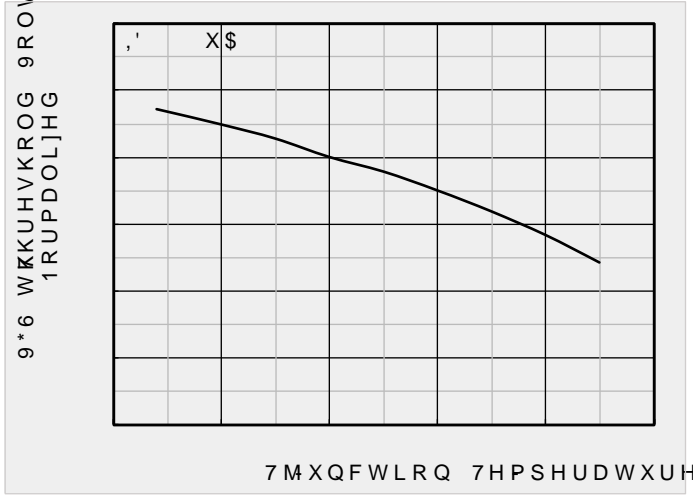
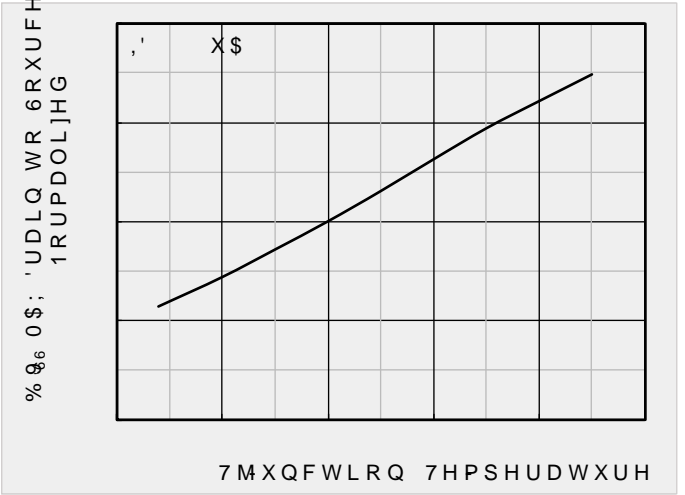
\$ 5HSHWLWLYH UDWLQJ SXOVH ZLWLFKXUHQW E\ PD[ MXQFWLRQ WHP  
 % .7 - 9 9.9 9 / P+ , \$6 \$  
 & 63LV EDVHG RQ PD[ MXQFWLRQ WHP & DSDFLWDQFH  
 ' 7KH YDOXH RYHU 50% ZLWK WKH GHSLFRUHQW ZLWLFKXUHQW & QSSHU LQ WKH VWLOO DLU F  
 7KH PD[LPXP DOORZHG MXQFWLRQ WHP & DSDFLWDQFH





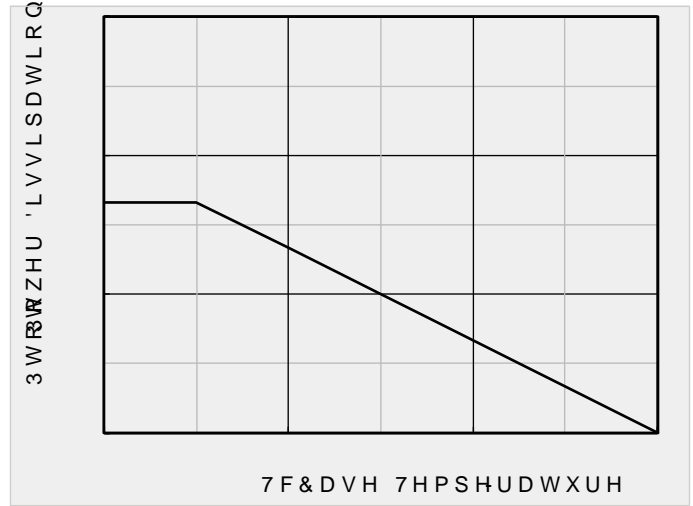
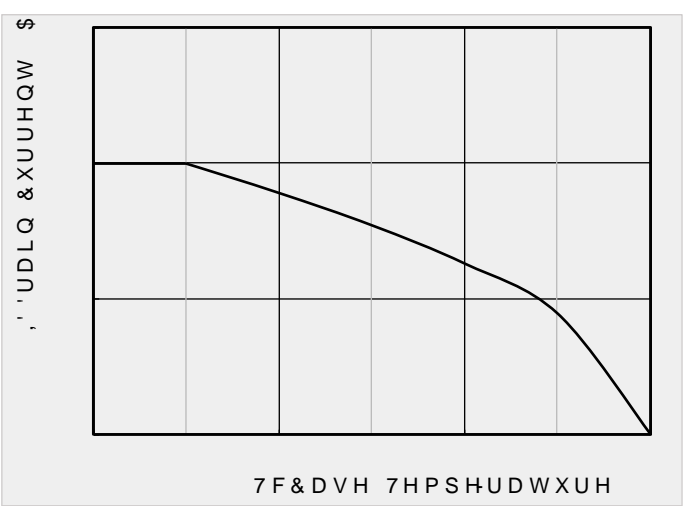
)LJXUH 96 RQ96 UDLQ & XUHQW

)R) LZU6 FKDV DR WHUHLHUWLF G



)LJXUH 1RUPDOLJHG R

)LJXUH HG 7HPSHUDWXUH YR

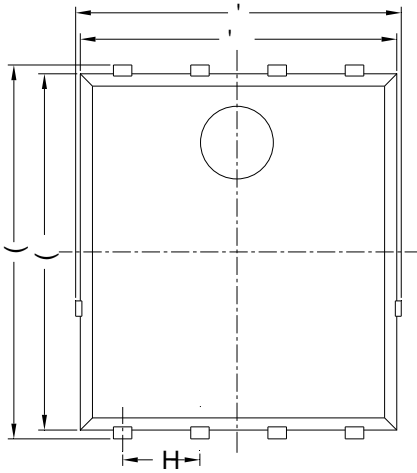


)LJXUH & XUHQW GLVLSDWLRQ

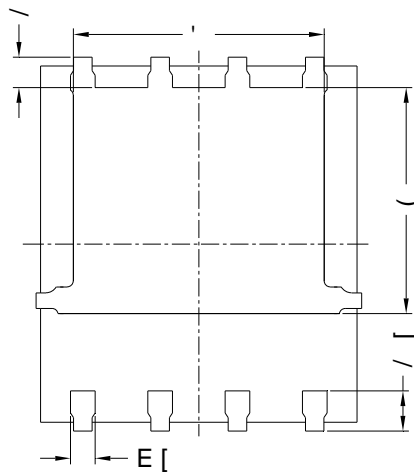
)LJXUH 3RZHU GL



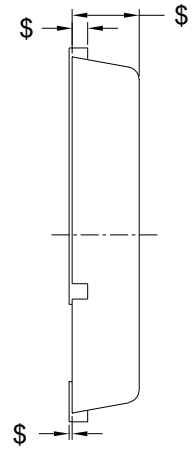
v 3')1 / 00 D3 FNDJH LQIRUPDWLRQ



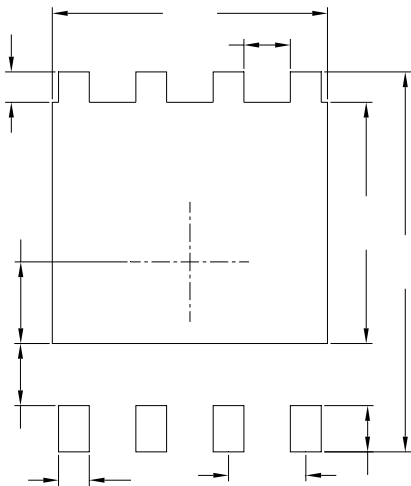
7RS 9LHZ  
!M'ö.



%RWRP 9LHZ  
6üM'ö.



6LGH 9LHZ  
xM'ö.



6XJJHVWHG 6ROGHU 3DG /D\RXW  
7RS 9LHZ

6 < 0 % 2 /	0, //, 0 (7 (5		
	0,1	120	0 \$ ;
(			
\$			
\$	% 6 &		
,			
(			
(			
(	5 ( )		
(	5 ( )		
/			
/	% 6 &		
E			
H	% 6 &		

1RWH

& R QWUROOLQJ GLPHQVLRQ LQ PLOOLPHW  
\* HQHUDO WROHUDQFH " PP  
7KH SDG OD\RXW LV IRU UHIHUHQFH SXUS



'LVFODLPHU

7KH LQIRUPDWLRQ SUHVHQWHG LQ WKLV <DQJ>KRXQVDQV MIRHU (WHIHWHUHQHFRQFHQROR  
ULJKW WR PDNH FKDQJH RU ZWLVK RXSWHQRSAURVGLXFFWRIGWVSOD\HG KHUHLQ WRGLHPSLUR  
RWKHU ZLVH

7KH SURGXFW OLVWJHQHWRI LEH LXV BSHZLWKF WXURRERWIDYRUQRWHGLQVPHGH FDO OLIH  
VDYLQJ OLIHVXVWDL<DQJMRH RUODLQDQRDRQXIPMV ERKURVLSHQQLWLRW\BQWGPDUH  
VXFK LPSURSHU XVH RI VDOH

7KLV SXEOLFDFWLRQ SXOSSHUWIDQVLRQURQPDVXLSRQLSHGHYRURXDGGLRQLRSDODVLRWHUPLWWRSX  
ZZZ \DQJMLHRPRQVXOW \RXUH QHDFHWRBQJWKWDQFH