
or

ified

0	

98	mJ

5 W

Units
/W

**DELIVERY
MODE**



YJQ3D5G04HQ

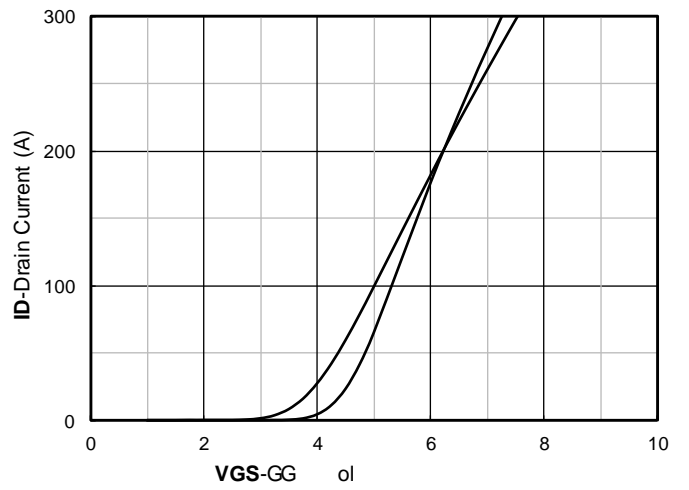
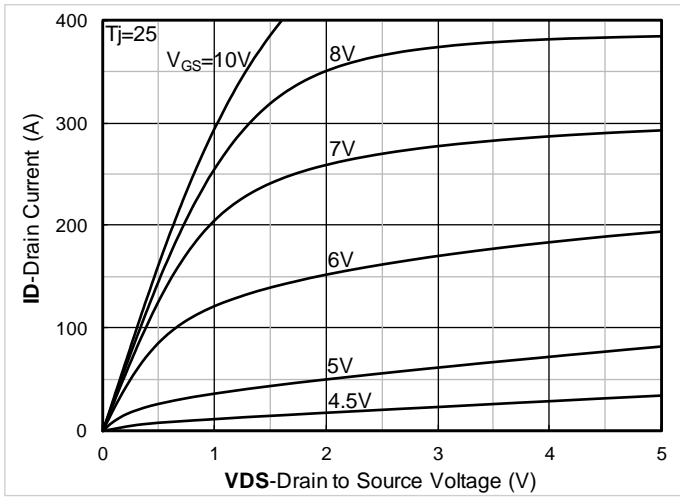
Electrical Characteristics

Parameter	Symbol	Conditions	Min	Typ	Max	Units
Static Parameter						
Drain-Source Breakdown Voltage	BV_{DSS}	$V_{GS}=0V, I_D=250\mu A, T_j=25$	40	-	-	V
		$V_{GS}=0V, I_D=1mA, T_j=25$	40	-	-	V
Zero Gate Voltage Drain Current	I_{DSS}	$V_{DS}=32V, V_{GS}=0V, T_j=25$	-	-	1	μA
		$V_{DS}=32V, V_{GS}=0V, T_j=125$	-	-	100	
Gate-Source Leakage Current	I_{GSS}	$V_{GS}=\pm 20V, V_{DS}=0V, T_j=25$	-	-	± 100	nA



YJQ3D5G04HQ

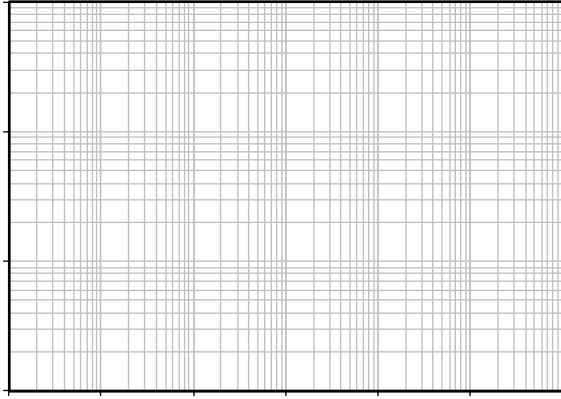
Typical Electrical and Thermal Characteristics Diagrams





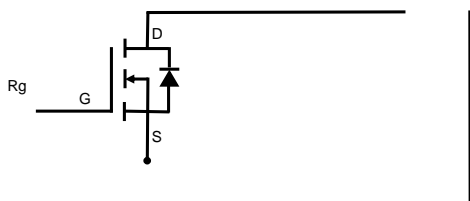
YJQ3D5G04HQ







YJQ3D5G04HQ

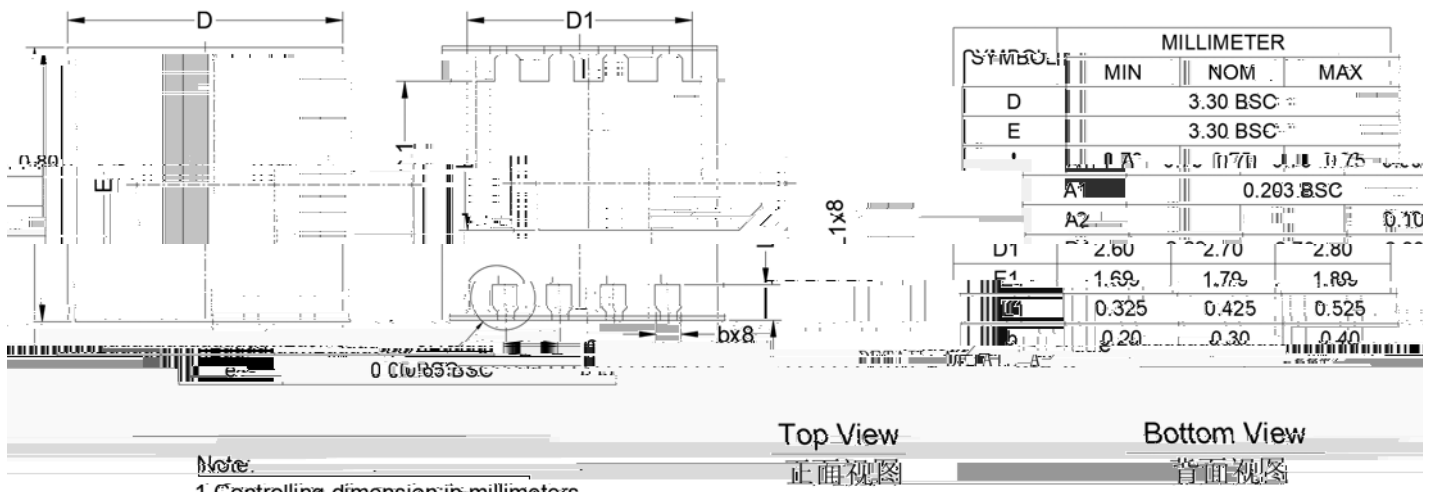


R shunt



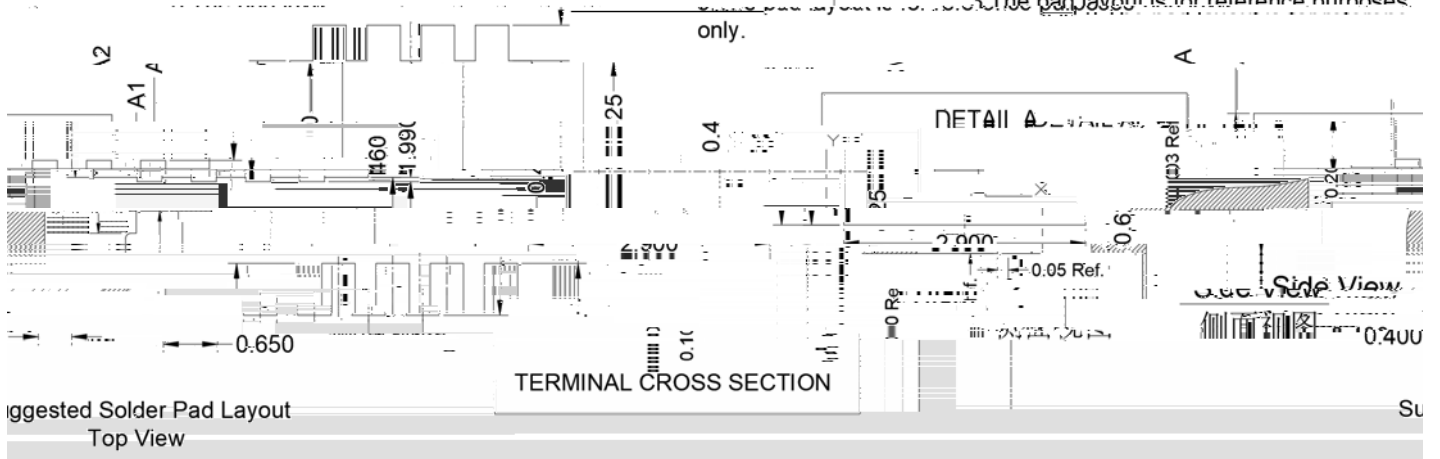
YJQ3D5G04HQ

DFN3333-8L-WF Package information



Note:
1. Controlling dimension in millimeters.

2. General tolerance: $\pm 0.10\text{mm}$.
3. The pad layout is for reference purposes.





YJQ3D5G04HQ

Disclaimer

The information presented in this document is for reference only. Yangzhou Yangjie Electronic Technology Co., Ltd. reserves the right to make changes without notice for the specification of the products displayed herein to improve reliability, function or design or otherwise.

The product listed herein is designed to be used with automotive electronics, are not designed for use in medical, life-saving, lifesustaining, or military, Yangjie or anyone on its behalf, assumes no responsibility or liability for any damages resulting from such improper use of sale.

This publication supersedes & replaces all information previously supplied. For additional information, please visit our website <http://www.21yangjie.com> , or consult your nearest Yangjie's sales office for further assistance.