

2- Line, Uni-directional, ESD protection diode

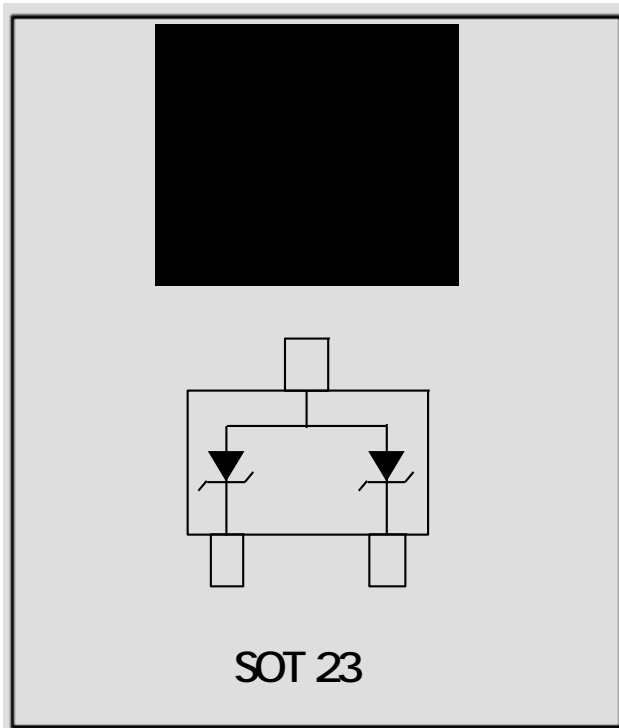
Features

$\pm 30\text{kV}$ contact, $\pm 30\text{kV}$ air
A ($t_p=8/20\mu\text{s}$)

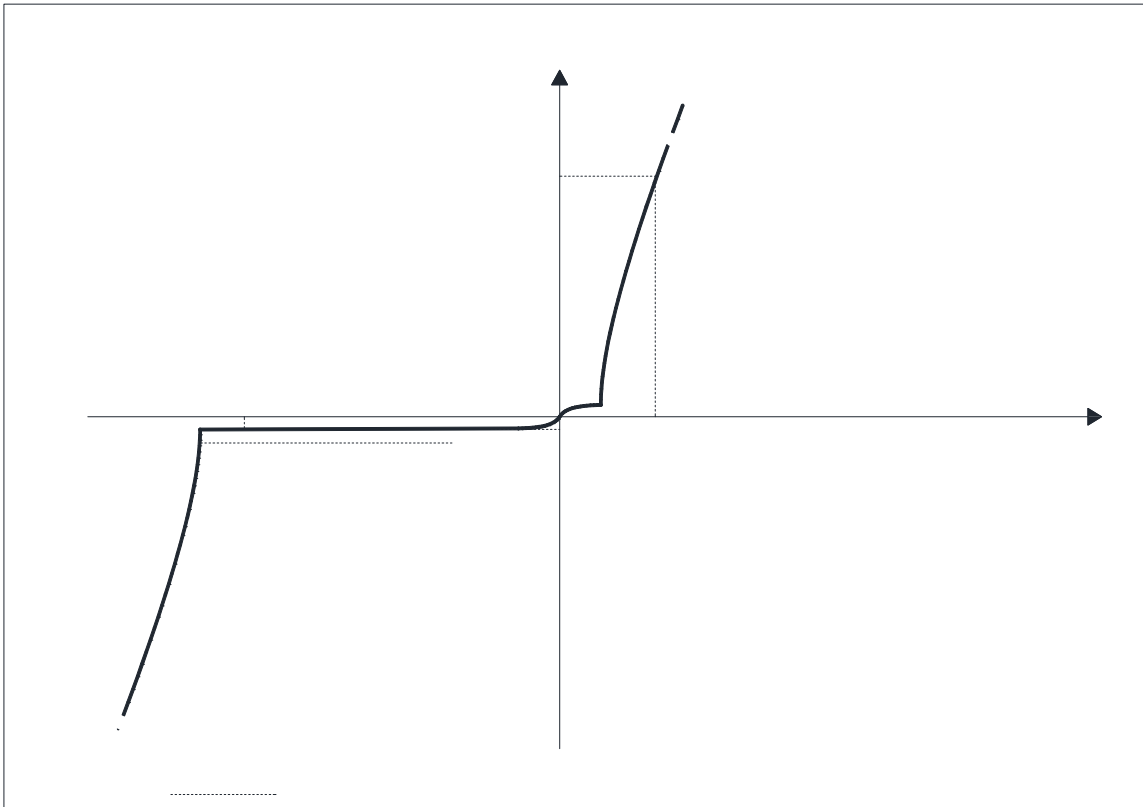
Applications

- Switches / Buttons
- Test Equipment/Instrumentation
- Point of Sale Terminals
- Medical Equipment
- Notebooks / Desktops / Servers
- Computer Peripherals
- CAN Bus protection
- Automotive applications

Mechanical Data



Definitions of electrical characteristics





ESD1202EQ

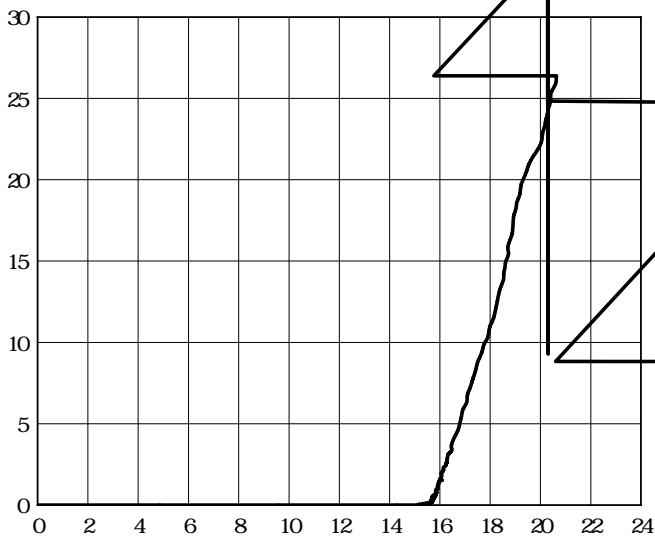
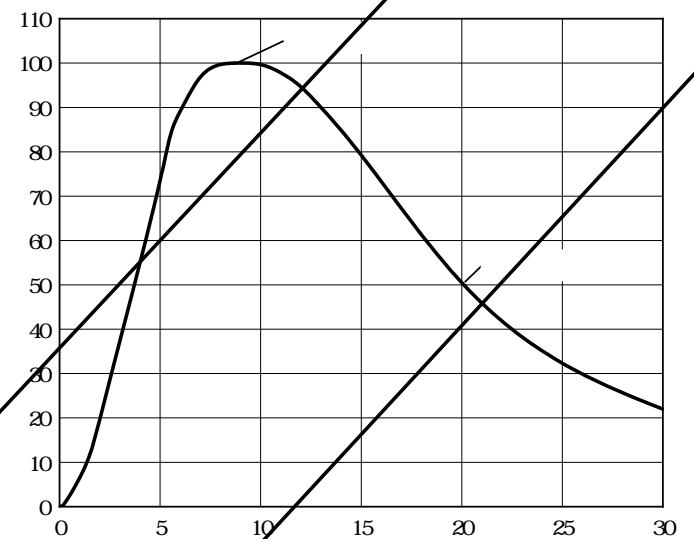
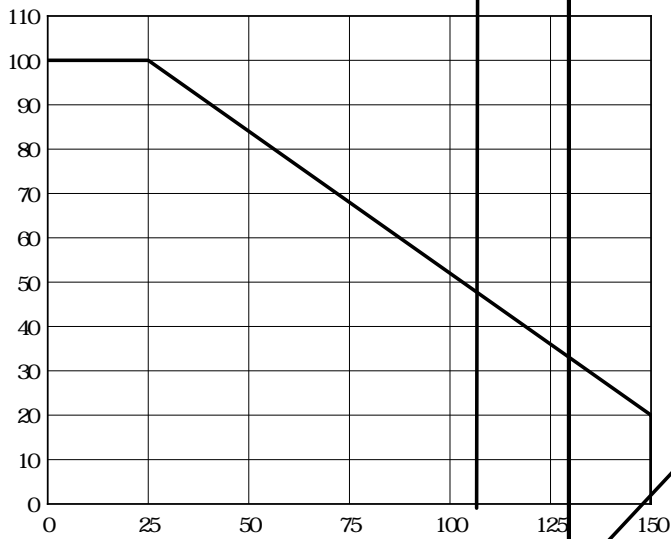
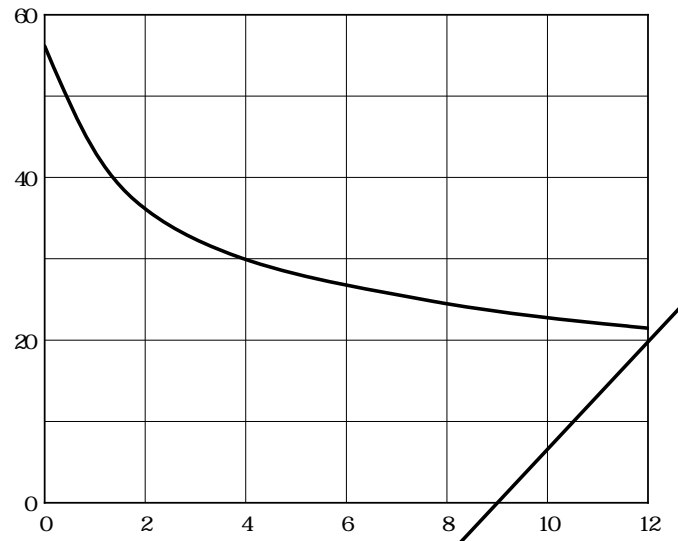
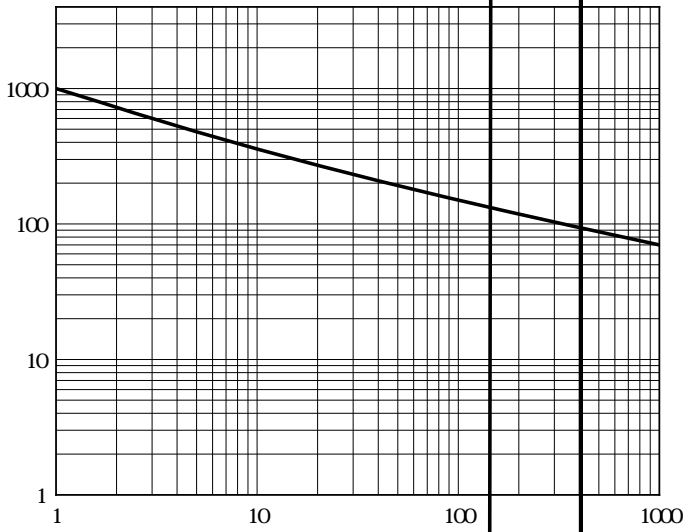
Maximum Ratings

PARAMETER	SYMBOL	LIMITS	UNIT



ESD1202EQ

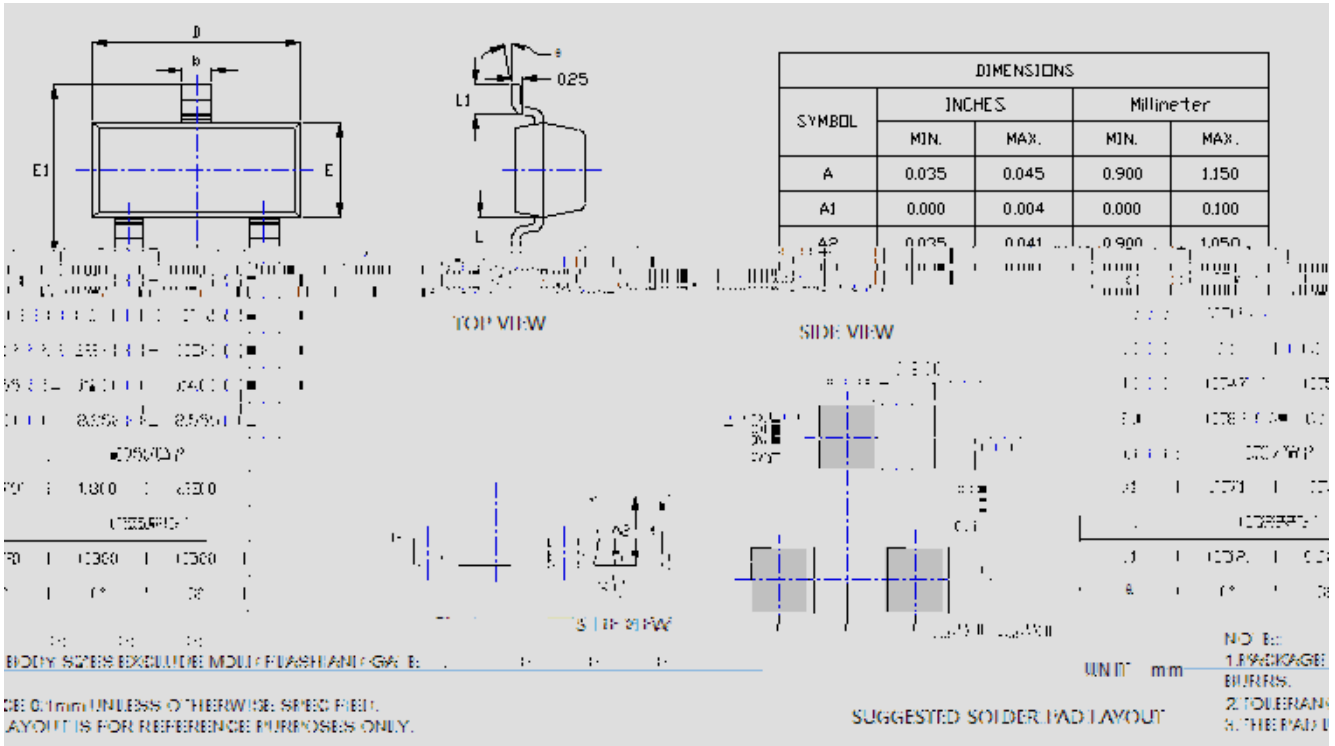
Characteristics (Typical)





ESD1202EQ

Outline Dimensions



Marking Information

