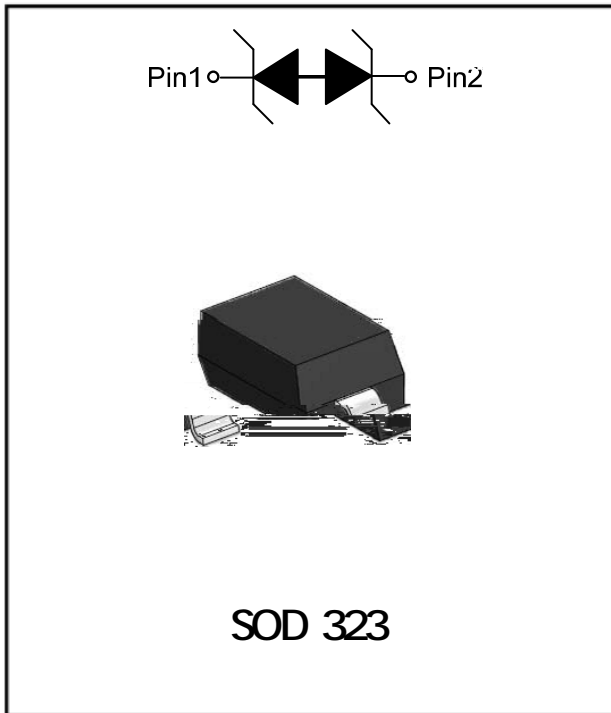


## 1- Line, Bi-directional, ESD protection diode



### Features

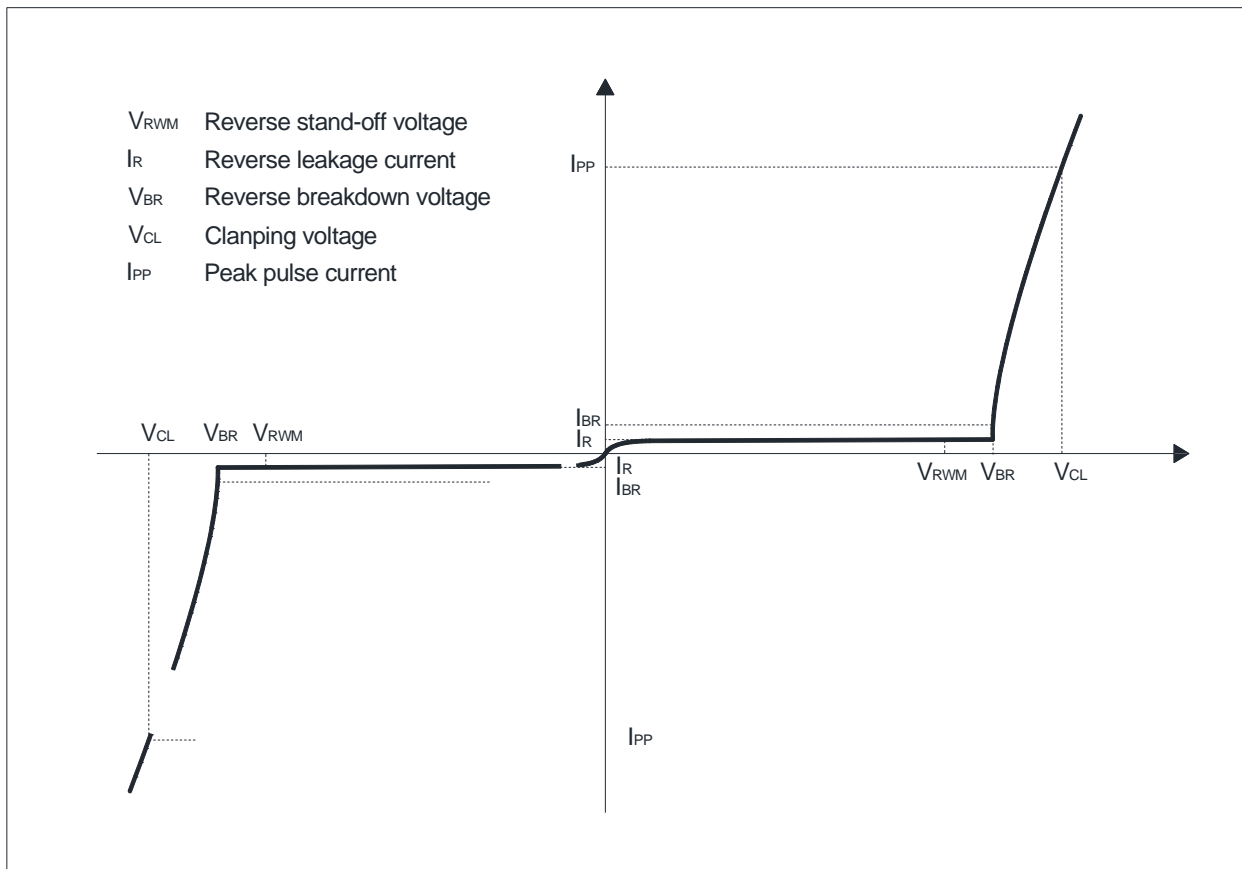
- Transient protection for each line according to IEC61000-4-2(ESD): IEC61000-4-5:10A
- Low leakage current
- Ultra low clamping voltage
- RoHS Compliant
- Part no. with suffix "Q" means AEC-Q101 qualified

### Applications

### Mechanical Data

- Package: SOD-323
- Lead Finish: Matte Tin
- Case Material: "Green" Molding Compound
- Moisture Sensitivity: Level 1 per J-STD-020

### Definitions of electrical characteristics





# ESD12VD3BQ

---

## Maximum Ratings

PARAMETER	SYMBOL	LIMITS	UNIT
-----------	--------	--------	------

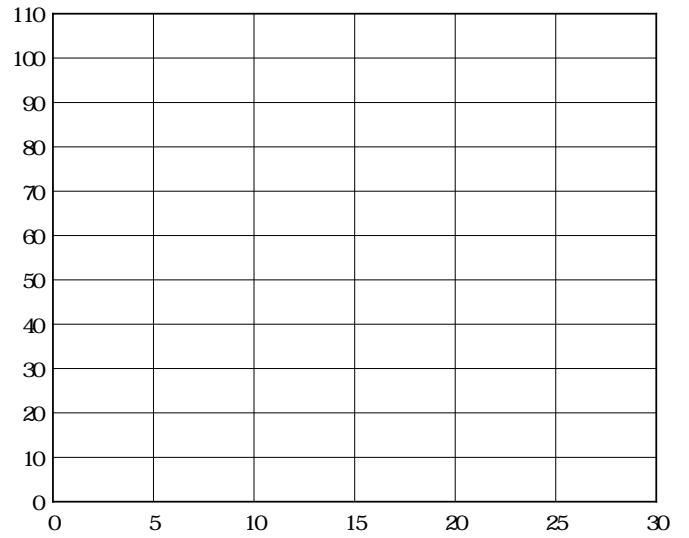
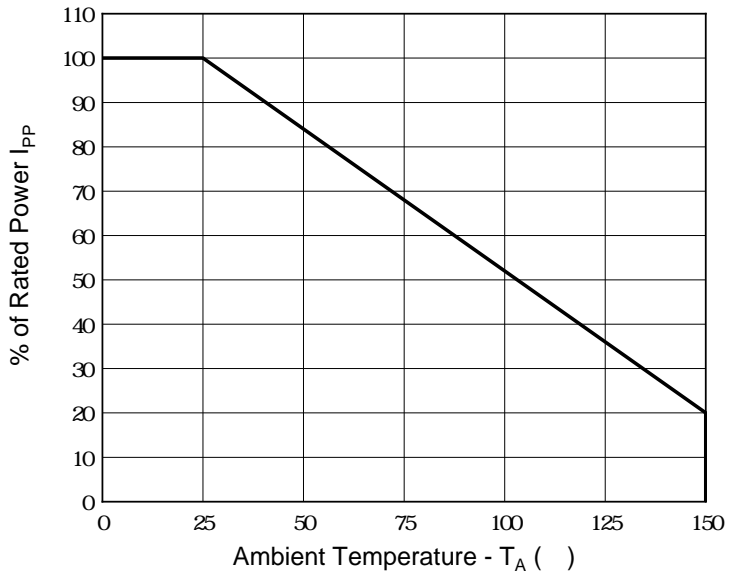
Peak pulse power ( $t_p = 8/20\mu s$ )

$P_{pk}$



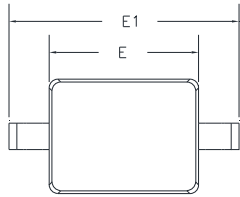
Characteristics (Typical)

Fig.3: Power Derating Curve

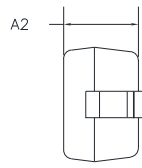




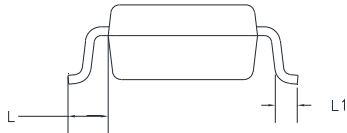
## Outline Dimensions



TOP VIEW

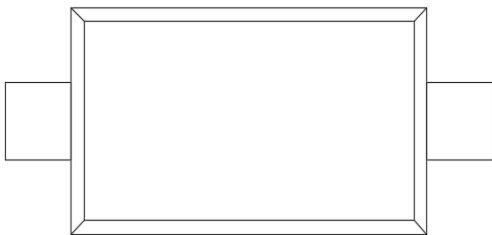


SIDE VIEW



SIDE VIEW

## Marking Information



**Note:**

1. All marking is at middle of the product body
2. All marking is in laser marking
3. Body color: Black

( 6 ' 9 ' % 4

---