



75B!: 8`V i g`9G8`dfchYWh]cb`X]cXY`



GCH!&

: YU h i f Y g`

- Epoxy meets UL-94 V-0 flammability rating and halogen free
- Moisture Sensitivity Level 1
- Dual Line CAN-FD Bus Protector for SOT-23 Package
- Max Peak Pulse Power 180W per Line (tp=8/20 μs)
- IEC 61000-4-2, level 4 (ESD)
- IEC 61000-4-5 (surge), I_{DD} = 5A at tp = 8/20 μs
- Part no. with suffix "Q" means AEC-Q101 qualified

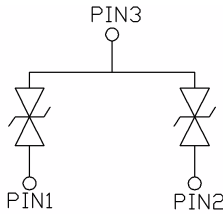
5dd`]WU h]c b g`

Automotive Controlled Area Network

A Y W \ U b] W U` ` 8 U h U`

7 U g Y. SOT-23

HY f a] b U` g. Tin plated leads, solderable per J-STD-002 and JESD22-B102



A U I] a i a` F U h] b] g` (T_a=25F

	I _{DD}	5	2
Ph loU dY H Y a mY oU h roY F U kdY	H _{ph d}	§ 7	! 22 r (.2\$
> rkWh flk H Y a mY oU h roY	>	H § 7	! 22 r (.2\$
< ra U k 6 lav A laY iHBM Note2	V _{ESD}	kV	30
IEC 61000-4-2 (contact discharge) Note2		kV	30

Note1 Non-repetitive current pulse 8/20 μs exponential decay waveform according to IEC 61000-4-5.

Note2 Measured from pin 1 to 3 or 2 to 3.

9`Y W h f] W U` ` 7 \ U f U W h Y f] g h] W g` (T_a=25 unless otherwise noted)

-H9A`	GMA 6C@`	I B-H`	7CB8-H-CBG`	A-B`	HMD`	A 5L`
Reverse Working Voltage	V _{RWM}	V		-	-	24
Reverse Breakdown Voltage	V _{BR}	V	I _T =1mA	25.5		35.5
Reverse Leakage Current	I _R	nA	V _{RWM} =24V	-	1	50

Clamping Voltage(pin 1 to 3 or 2 to 3)) c

	j	pF	V _R =0V, f=1MHZ	-	6	10
--	---	----	----------------------------	---	---	----

Notes:

(1). Non-repetitive current pulse, according to IEC61000-4-5.

(2). TLP parameter: Z₀ = 50 , tp = 100ns, tr = 2ns, averaging window from 60ns to 80ns. RDYN is calculated from 4A to 16A.



CfXyf]b [=bZcf a Uh]cb (Example)

DF9:9F98'D#B'	D57?B; ; 7C89'	IB-H' K9=: <Hfl[L	A-B=A I A' D57?5; 9fidWgŁ	=BB9F'6CL' E I 5BH-HMfidWgŁ	C I H9F'75FHCB' E I 5BH-HMfidWgŁ	89@-J9FM'AC89
ESD2CANFD24T2Q	F2	Approximate 0.01	3000	30000	120000	7" reel

7 \UfUWhYf]gh]Wg (Typical)

Fig.1: 8/20µs Pulse Waveform

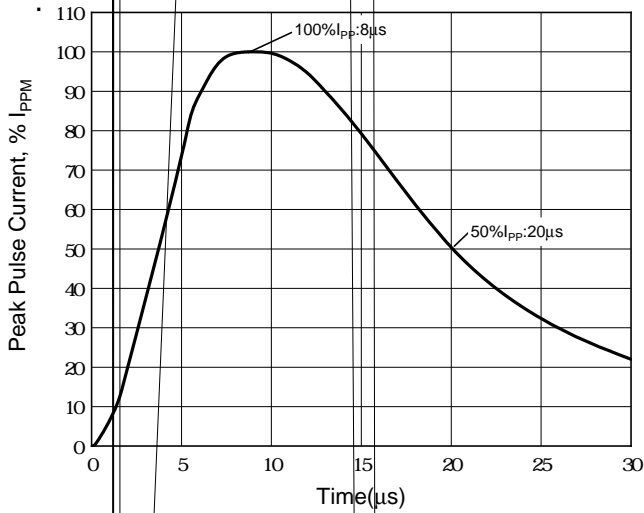


Fig.2: Peak Pulse Current vs Clamping Voltage

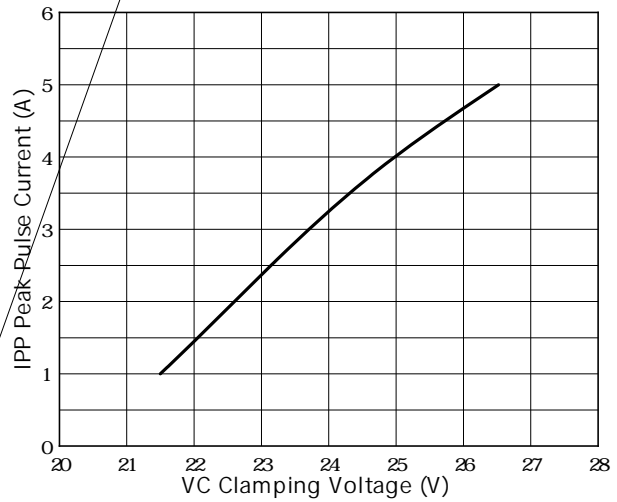
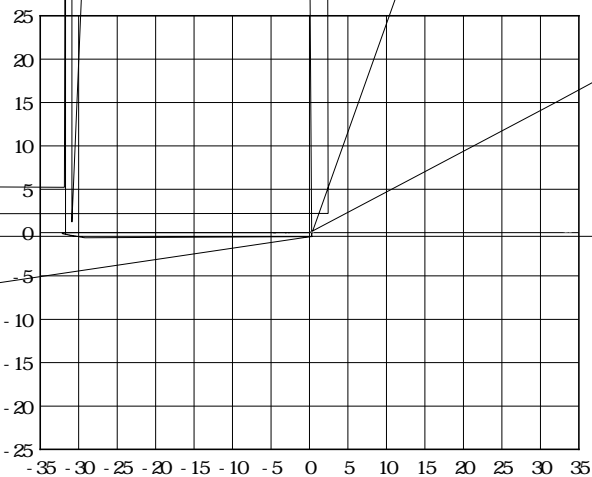
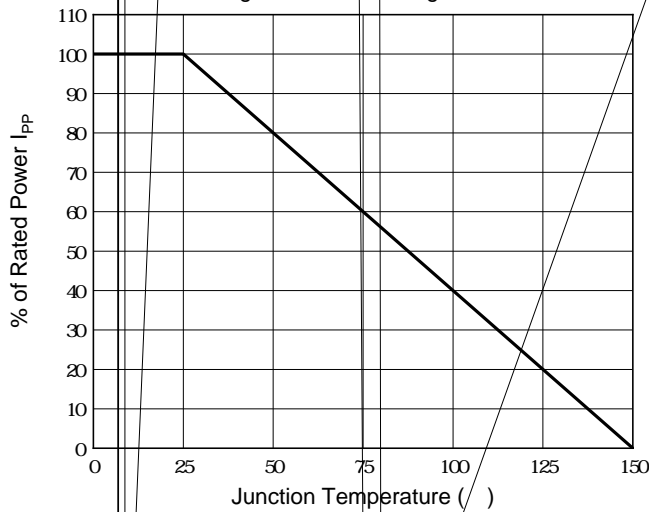
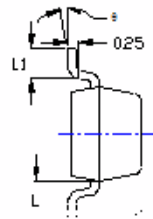
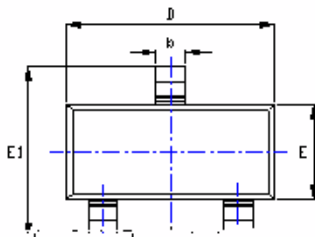


Fig.3: Power Derating Curve





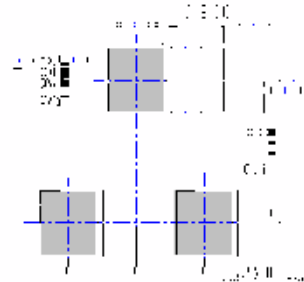
C i h] b Y ' 8] a Y b g] c b g ' (mirrored text)



SYMBOL	DIMENSIONS			
	INCHES		Millimeter	
	MIN.	MAX.	MIN.	MAX.
A	0.035	0.045	0.900	1.150
A1	0.000	0.004	0.000	0.100
A2	0.035	0.041	0.900	1.050

TOP VIEW

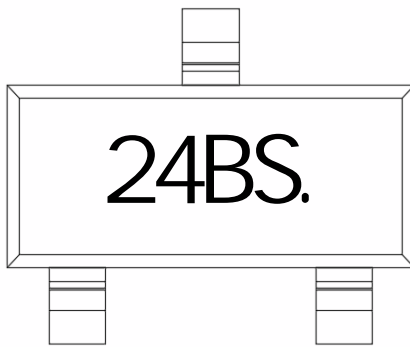
SIDE VIEW



BODY SIZE EXCLUDE MOLD FLASH AND GATE.
 0.1mm UNLESS OTHERWISE SPECIFIED.
 LAYOUT IS FOR REFERENCE PURPOSES ONLY.

UNIT: mm
 NO. 1: PACKAGE DIMENSIONS
 NO. 2: TOLERANCE
 NO. 3: THERPAD LAYOUT

A U f _] b [' : b z c f a U h] c b (mirrored text)



- Note:
1. All marking is at middle of the product body
 2. All marking is in laser marking
 3. Body color: Black



8]gW'U]a Yf

Th p