

ÁFÁDÁ Í Á

ÚÈÙHFÎFÁ

ÿæ} * : @ [~ Áÿæ} * bā^ÁÒ|^&c! [] ä&ÁV^&@} [| [* ^ ÁÔ [ÉÉÁŠcáÉÁ
Á



BC847BSQ

Maximum Ratings

Item	Symbol	Unit	Conditions	Value
Operating Power	P_{tot}	W	$T_c = 25^\circ C$	1.0
Collector Power	$P_{c,DC}$	W	$T_c = 25^\circ C$	1.0
Collector Current	I_C	A	$T_c = 25^\circ C$	0.1
Collector-Base Voltage	V_{CB}	V		5.0
Collector-Emitter Voltage	V_{CE}	V		15.0
Base-Emitter Voltage	V_{BE}	V		0.7
Base Current	I_B	A		0.02
Storage Time	t_{stg}	ns		100
Turn-On Time	t_{on}	ns		100
Turn-Off Time	t_{off}	ns		100

Electrical Characteristics

Symbol	Unit	Min	TYP	Max
DC Current Gain	β_{DC}	100	150	200
AC Current Gain	β_{AC}	100	150	200
Collector-Emitter Saturation Voltage	$V_{CE(sat)}$	0.2	0.3	0.4
Base-Emitter Saturation Voltage	$V_{BE(sat)}$	0.6	0.7	0.8
Collector-Emitter Voltage	V_{CE}	15.0	15.0	15.0
Base-Emitter Voltage	V_{BE}	0.7	0.7	0.7
Collector Current	I_C	0.01	0.01	0.01
Base Current	I_B	0.002	0.002	0.002
Storage Time	t_{stg}	100	100	100
Turn-On Time	t_{on}	100	100	100
Turn-Off Time	t_{off}	100	100	100

Notes:

1.

AGADA TA



BC847BSQ

Characteristics Q1&Q2-NPN

Fig 2 - DC Current Gain

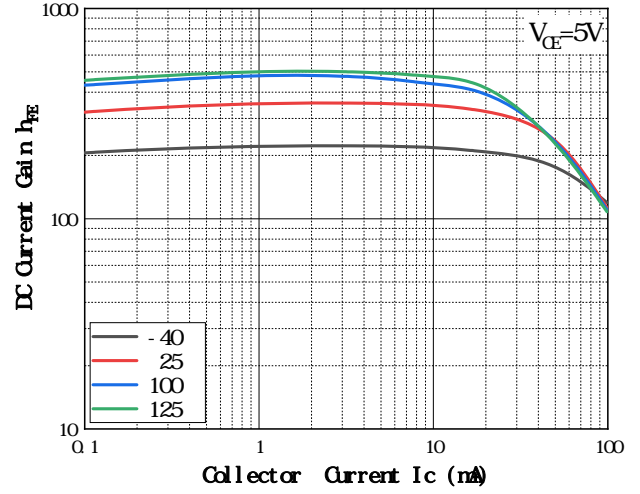


Fig 3 - Collect-Emittter Saturation Voltage

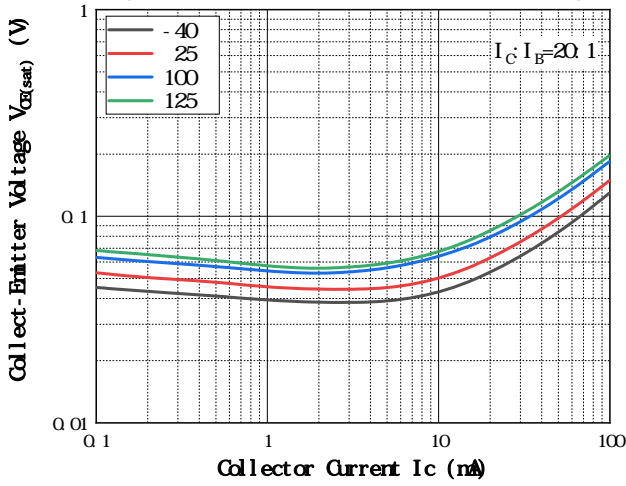


Fig 4 - Base-Emittter Voltage

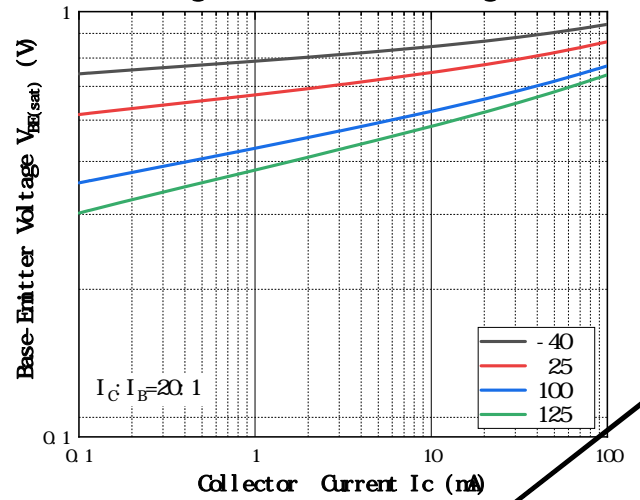
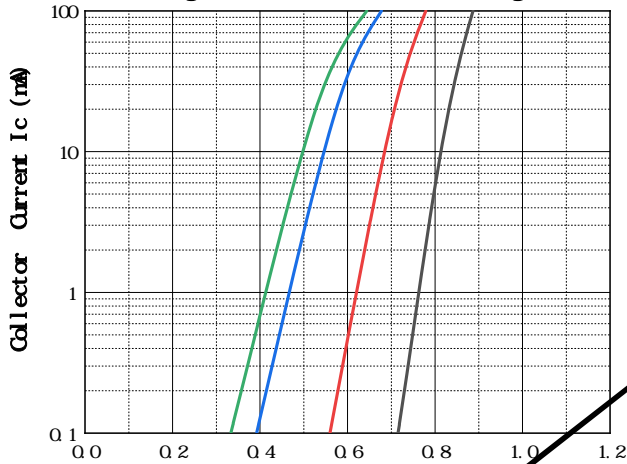


Fig 5 - Base-Emittter On Voltage

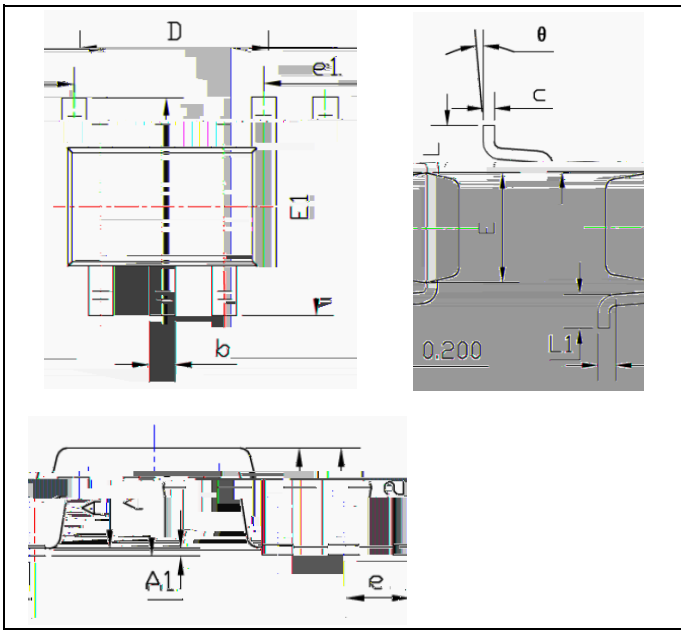


ÁHÁDÁ T Á



BC847BSQ

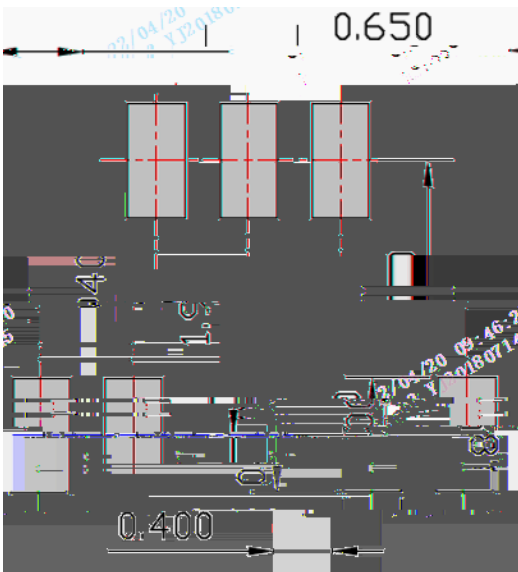
SOT-363 Package Outline Dimensions



SYMBOL	DIMENSIONS		TOLERANCES	
	MIN	MAX	MIN	MAX
A	0.935	0.943	0.900	1.100
A1	0.000	0.004	0.000	0.100
e	0.350	0.350	0.300	0.300
e1	0.250	0.250	0.000	0.150
L1	0.300	0.300	0.000	0.100
b	0.300	0.300	0.000	0.100
θ	0.100	0.100	0.000	0.050
D	2.150	2.450	0.085	0.091
026TYP	0.650TYP		e	0.350
0.010	0.018	0.260	0.460	

Å
Å

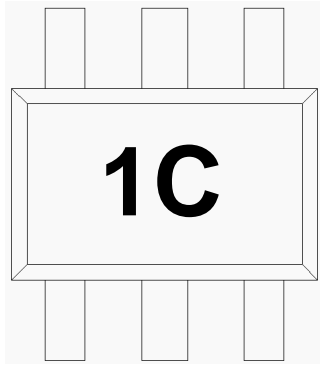
SOT-363 Suggested Pad Layout



Unit mm

Å I ÅD Å T Å

Marking Information



PC^{AK}
FACE | A { æ: \ a } * Å • Å æ c Å { å å | ^ Å [- Å c @ ^ Å] : [a ~ & c Å [a ^
GEACE | A { æ: \ a } * Å • Å a } A | æ • ^ Å { æ: \ a } *
HEAFÖ Å • Å T æ: \ a } * Å Ö [a ^
IEÁÓ [a ^ Å & [| [Å Ö | æ & \

