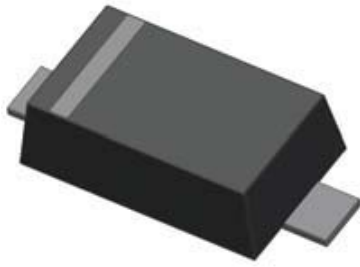
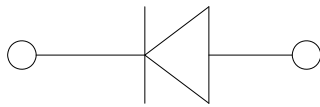


Small Signal Schottky Barrier Diode



SOD523



Features

- Epoxy meets UL-94 V-0 flammability rating and halogen free
- Moisture Sensitivity Level 1
- V_{RRM} 30V
- I_{FAV} 200mA
- Part no. with suffix "Q" means AEC-Q101 qualified

Applications

- Low Forward Voltage Drop
- Automotive

Mechanical Data

- Case:** SOD523
- Terminals:** Tin plated leads, solderable per J-STD-002 and JESD22-B102
- Polarity:** Cathode line denotes the cathode end

Maximum Ratings ($T_a=25$ Unless otherwise specified)

PARAMETER	SYMBOL	UNIT	CONDITIONS	VALUE
Maximum Repetitive peak reverse voltage	V_{RRM}	V		30
DC Blocking Voltage	V_R	V		30
Average Forward Current	I_{FAV}	q		200
Peak Forward Surge Current	I_{FSM}	A	8.3ms, half sine	2
Power Dissipation	P_{tot}	mW		150
Thermal Resistance Junction to Ambient	R_{thJA}	K/W		667
Junction Temperature	T_J			-55 to +125
Storage Temperature Range	T_{stg}			-55 to +125



Characteristics (Typical)

Fig.1 P_D-T_A

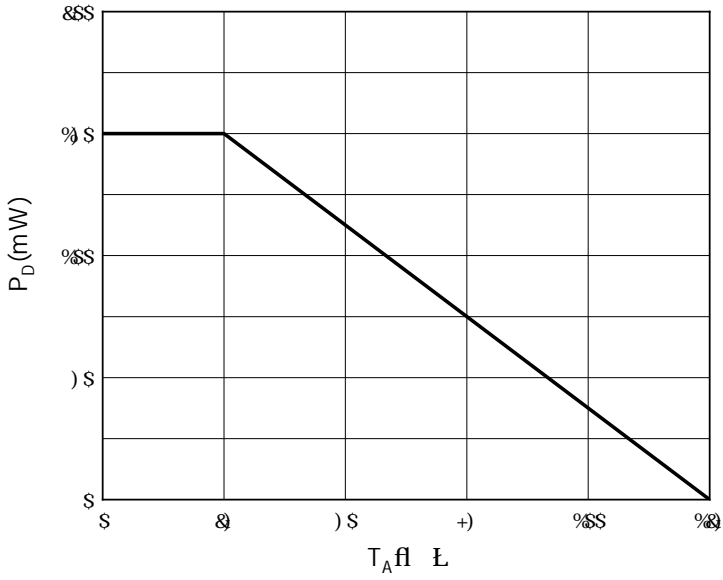


Fig.2: Capacitance Characteristics

