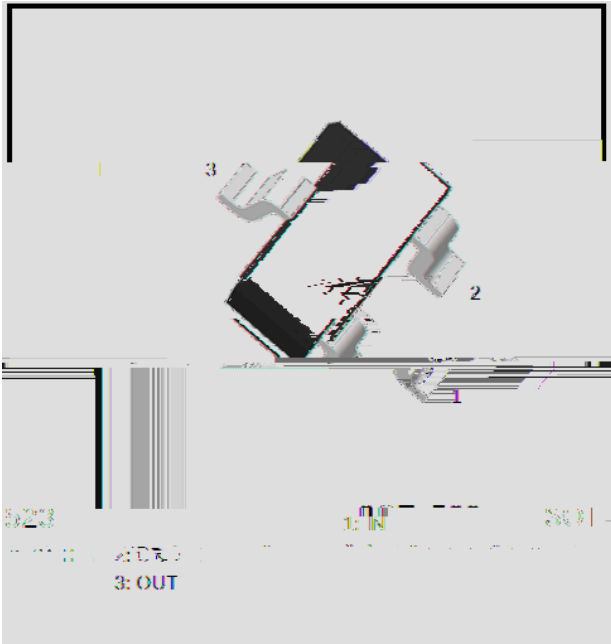


DBD 8] [] h U ` H f U b g] g h c f g fl 6 i] ` h !



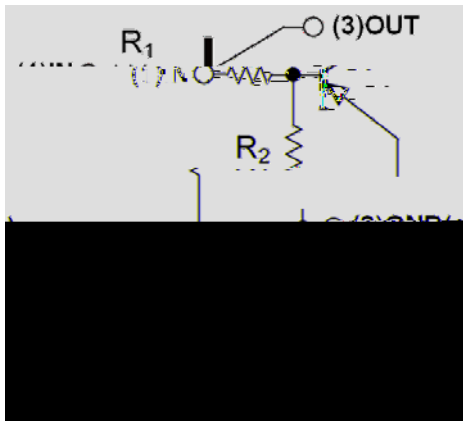
Features

- Moisture Sensitivity Level 1
- Surface mount package ideally Suited for Automatic Insertion
- Halogen-free

Mechanical Data

- Package:** SOT-523
- Terminals:** Tin plated leads, solderable per J-STD-002 and JESD22-B102
- Marking:** E32

Equivalent circuit



Maximum Ratings (Ta=25 Unless otherwise specified)

	cc	V		-5 \$
In d ut Voltage	iV	V		-12 to Ž 5
Out d ut Current	oI	mA		-1 \$ \$
Po k er Dissi d ation	dP	mW		15 \$
Junction Tem d erature	J T			
	STG			-55 to +150



DTA123JE

Electrical Characteristics (Ta=25 unless otherwise specified)

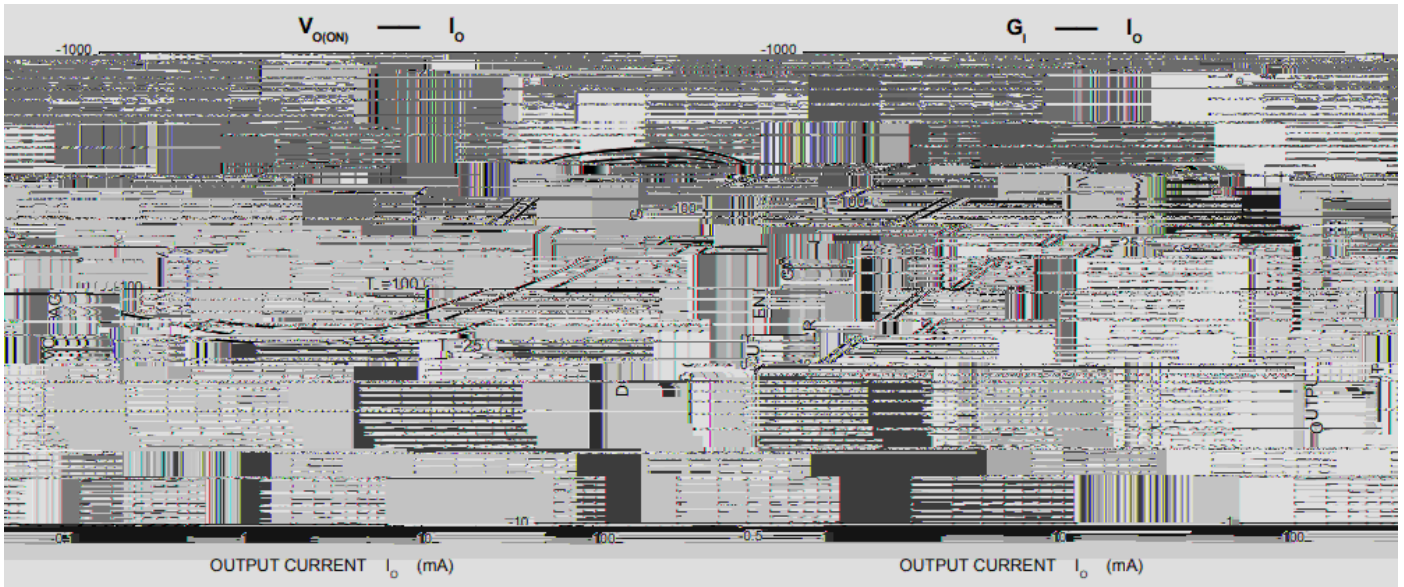
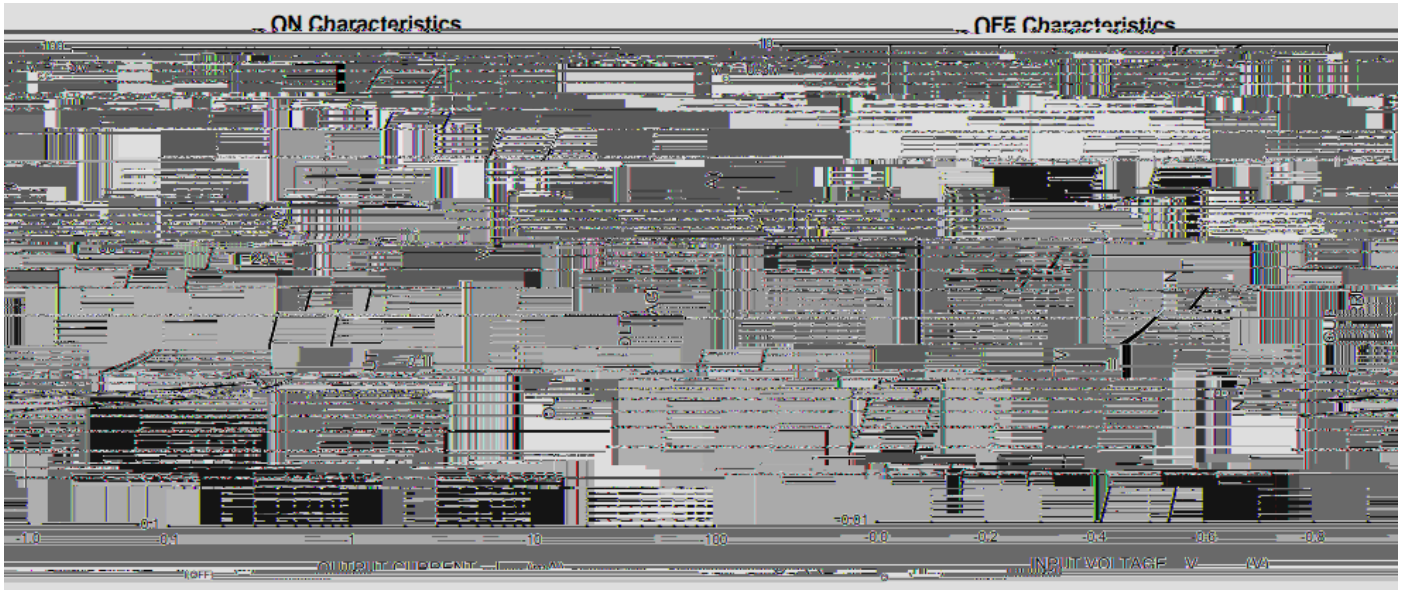
ITEM	SYMBOL	UNIT	CONDITIONS	MIN	TYP	MAX
------	--------	------	------------	-----	-----	-----

Input voltage



DTA123JE

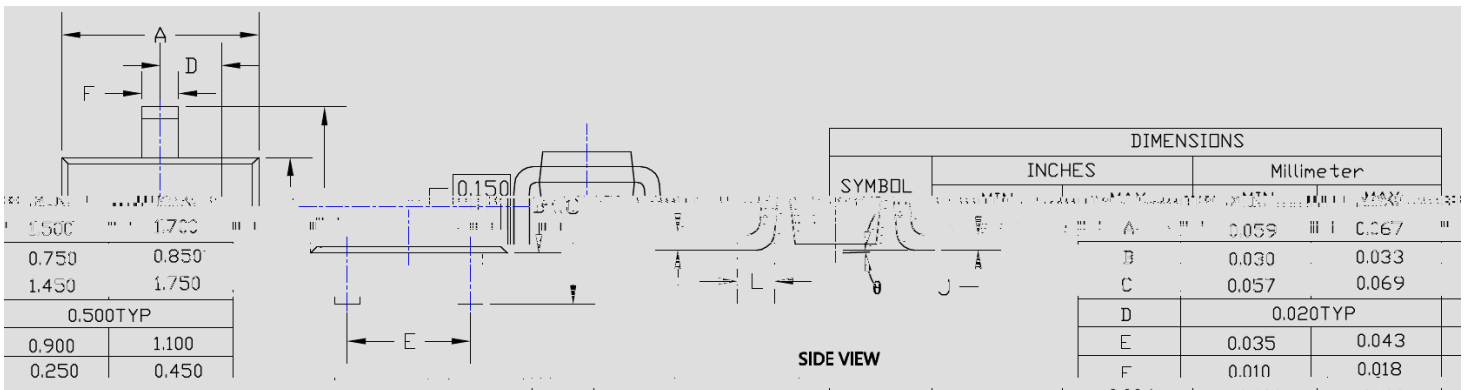
Characteristics (Typical)





DTA123JE

SOT-523 Package Outline Dimensions



Note:

1. All dimensions are in millimeters (mm) unless otherwise specified.



Disclaimer

The information presented in this document is for reference only. Yangzhou Yangjie Electronic Technology Co., Ltd. reserves the right to make changes without notice for the specification of the products displayed herein to improve reliability, function or design or otherwise.

The product listed herein is designed to be used with ordinary electronic equipment or devices, and not designed to be used with equipment or devices which require high level of reliability and the malfunction of which would directly endanger human life (such as medical instruments, transportation equipment, aerospace machinery, nuclear-reactor controllers, fuel controllers and other safety devices), Yangjie or anyone on its behalf, assumes no responsibility or liability for any damages resulting from such improper use of sale.

This publication supersedes & replaces all information previously supplied. For additional information, please visit our website [http:// www.21yangjie.com](http://www.21yangjie.com) , or consult your nearest Yangjie's sales office for further assistance.