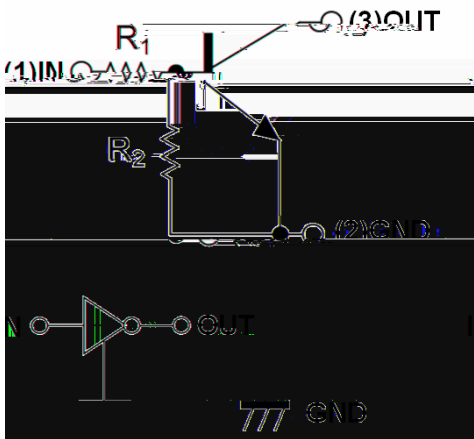




Moisture Sensitivity Level 1
Surface mount package ideally Suited for Automatic
Insertion
Halogen-free

: SOT-523
: Tin plated leads, solderable per
J-STD-002 and JESD22-B102
62



(Ta=25 Unless otherwise specified)

Supply Voltage	V _{CC}	V		50
Input Voltage	V _{IN}	V		-5 to +12
Output Current	I _O	mA		100
Power Dissipation	P _D	mW		150
Junction Temperature	T _J			150
Storage Temperature	T _{STG}			-55 to +150



(Ta=25 unless otherwise specified)

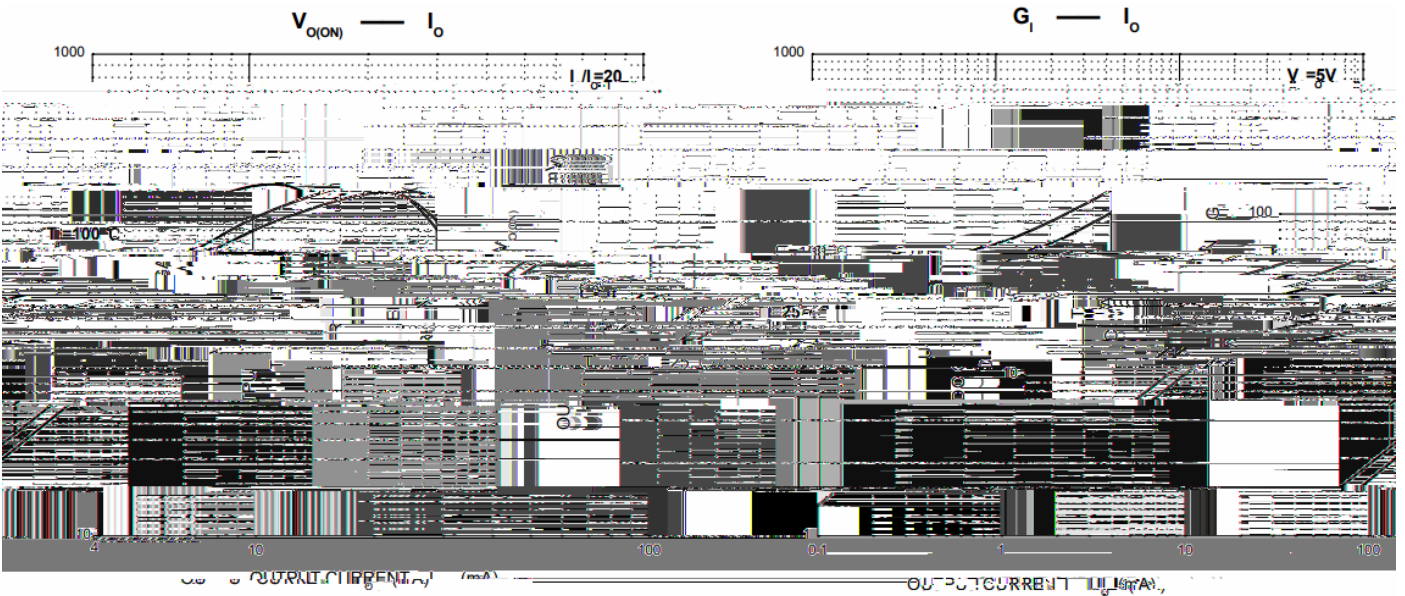
Input voltage	$V_{I(off)}$	V	$V_{CC}=5V, I_o=100\mu A$	0.3	-	-
	$V_{I(on)}$	V	$V_o=0.3V, I_o=20mA$	-	-	3
Output voltage	$V_{O(on)}$	V	$I_o / I_i = 10mA/0.5 mA$	-	-	0.3
Input current	I_i	mA	$V_i=5V$	-	-	3.8
Output current	$I_{O(off)}$	μA	$V_{CC}=50V, V_i=0$	-	-	0.5
DC current gain	G_i		$V_o=5V, I_o = 10mA$	33	-	-
Input resistance	R_1	k		1.54	2.2	2.86
Resistance ratio	R_2/R_1			3.6	4.5	5.5
Transition frequency	f_T	MHz	$V_o=10V, I_o=-5mA$	-	250	-

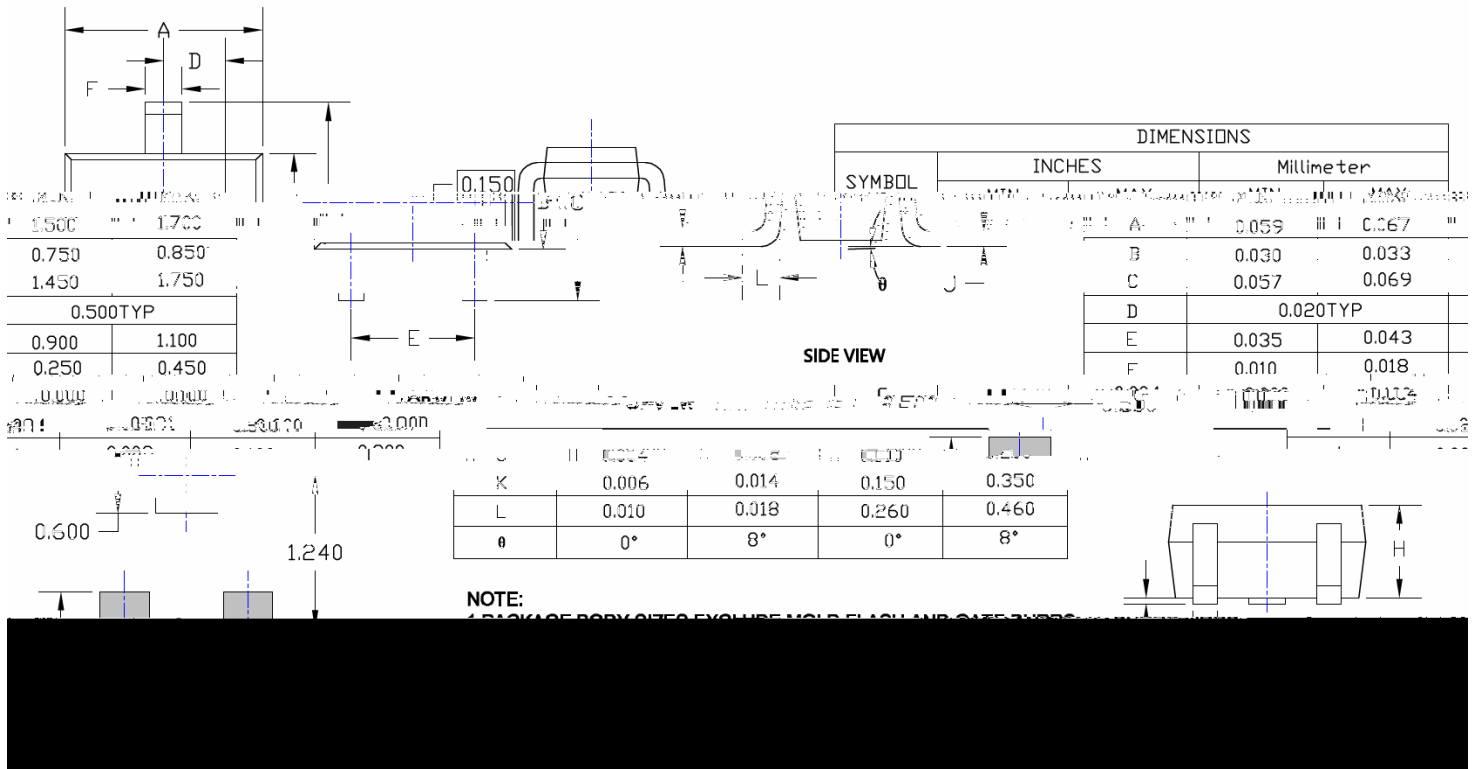
(Example)

DTC123YE	F2	Approximate 0.0027	3000	30000	120000	7" reel
----------	----	--------------------	------	-------	--------	---------



(Typical)





Note:

1. All dimensions are in millimeters (mm) unless otherwise specified.



