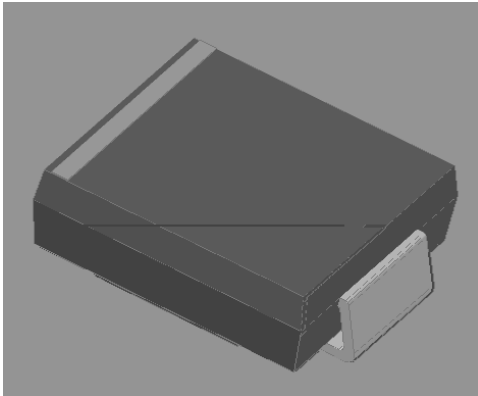


Surface Mount Ultrafast Rectifier Diode



Features

- Ultrafast reverse recovery time
- Low leakage current
- Low switching losses, high efficiency
- High forward surge capability
- Solder dip 260 °C max. 10 s, per JESD 22-B106

Typical Applications

For use in high frequency rectification and freewheel application in switching mode converters and inverters for consumer, computer and telecommunication.

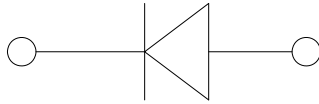
Mechanical Data

Package: DO-214AB (SMC)

Molding compound meets UL 94 V-0 flammability rating
RoHS-compliant, halogen-free

Terminals: Tin plated leads, solderable per J-STD-002 and JESD22-B102

Polarity: Color band denotes the cathode end



Maximum Ratings ($T_a=25$ Unless otherwise specified)

PARAMETER	SYMBOL	UNIT	MURS480
Device marking code			MURS480
Maximum Repetitive Peak Reverse Voltage	V_{RRM}	V	800
Maximum RMS Voltage	V_{RMS}	V	560
Maximum DC blocking Voltage	V_{DC}	V	800
Average Rectified Output Current @60Hz sine wave, Resistance load, TL (FIG.1)	I_o	A	4.0
Forward Surge Current (Non-repetitive) @60Hz Half-sine wave, 1 cycle, $T_j=25$	I_{FSM}	A	100
Forward Surge Current (Non-repetitive) @1ms, square wave, 1 cycle, $T_j=25$			200
Current squared time @1ms t 8.3ms $T_j=25$	I^2t	A^2s	41.5
Storage Temperature	T_{stg}		-55 ~ +150
Junction Temperature	T_j		-55 ~ +150

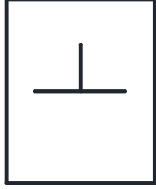
Electrical Characteristics $T_a=25$ Unless otherwise specified

PARAMETER	SYMBOL	UNIT	TEST CONDITIONS
-----------	--------	------	-----------------

MURS480



Suggested pad layout



DO-214AB (SMC)	
Dim	Min
P1	9.9
P2	3.84
Q1	3.03
Q2	3.82

Dimensions in millimeters



MURS480

Disclaimer

The information presented in this document is for reference only. Yangzhou Yangjie Electronic Technology Co., Ltd. reserves the right to make changes without notice for the specification of the products displayed herein to improve reliability, function o