



# General Purpose Rectifier Diodes

## Features

- > igh surge forward current capability
- > igh purity & high temperature epoxy encapsulation for enhanced mechanical strength and moisture resistance
- Guard ring for enhanced ruggedness and long term reliability
- Solder dip 27 ) š C max & per > ESD 22-B106

## Typical Application

Input rectification

## Mechanical Data

Package: TO-247AC

Molding compound meets UL - 4 V-0 flammability rating & Ro < S-compliant & halogen-free

Terminals: Tin plated leads & solderable per

> -STD-00 M M P m MPolarity: As marked

## Maximum Ratings (T = 25°C)

PARAMETER	SYMBOL	UNIT	60EPS22
Device marking code			60EPS22
Maximum Repetitive Peak Reverse Voltage	V <sub>RRM</sub>	V	2200
Maximum RMS Voltage	V <sub>RMS</sub>	V	1 ) 40
Maximum DC Blocking Voltage	V <sub>DC</sub>	V	2200
Average Rectified Output Current 4 60 < n half sine-wave & R-load & Tc (FIG.1)	I <sub>o</sub>	A	60
Surge(Non-repetitive) Forward Current 4 60 < n half sine-wave & 1 cycle & T ^ 12 )	I <sub>FSM</sub>	A	
Reverse Leakage Current (I <sub>RM</sub> = 100V, T = 25°C)	I <sub>RM</sub>	μA	

## Electrical Characteristics (T = 25°C)

PARAMETER	SYMBOL	UNIT	TEST CONDITIONS	Min	Typ	Max
Instantaneous forward voltage drop per diode	V <sub>FM</sub>	V	I <sub>FM</sub> = 1.30.0A	0.7	1.0 )	1.30
			I <sub>FM</sub> = 1.60.0A	-	1.22	1. ) 0
DC reverse current at rated DC blocking voltage per diode	I <sub>RRM1</sub>	μA	V <sub>RM</sub> = 1 V <sub>RRM</sub> T ^ 12 )			

% # (

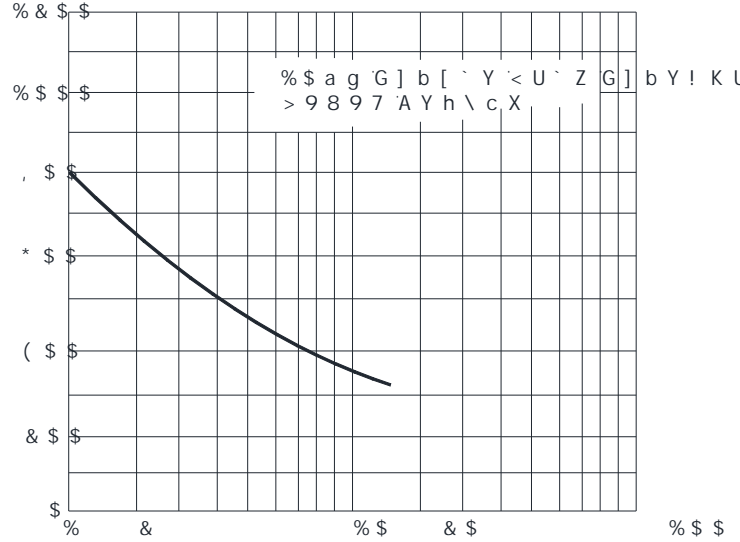


# 60EPS22

## Thermal Characteristics

PARAMETER		SYMBOL	UNIT	60EPS22
Typical Thermal Resistance	Between junction and ambient	$R_{\theta JA}$	$^{\circ}C/W$	
				5

## Characteristics (Typical)

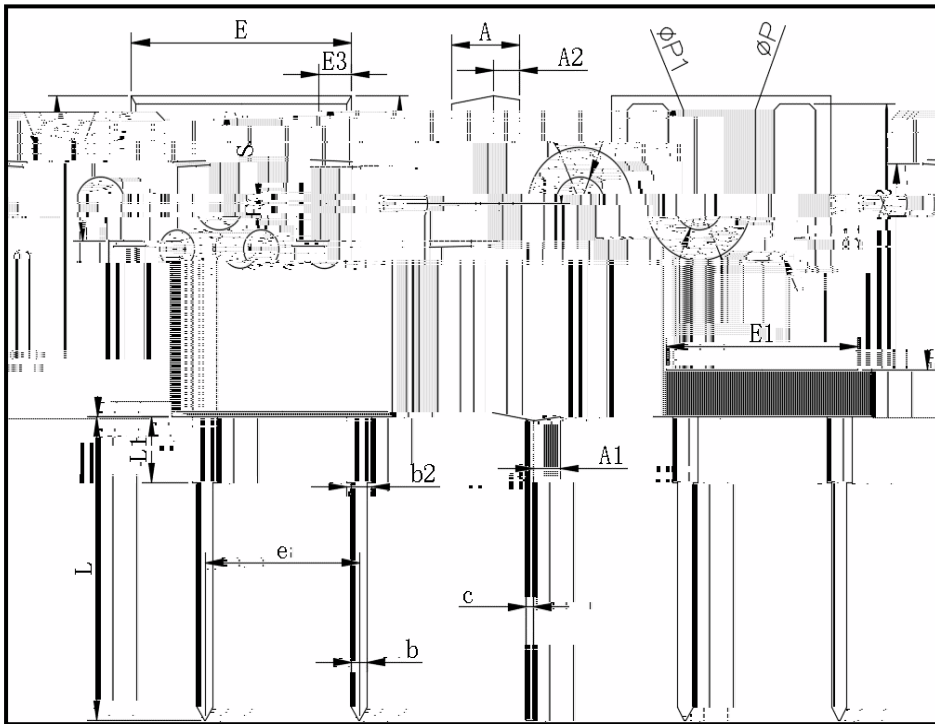


& # (



# 60EPS22

## Outline Dimensions



TO-247AC		
Dim	Min	Max
A	4.80	) .20
A1	2.21	2.61
A2	1.8 )	2.1 )
b	1.00	1.40
b2	1. - 1	2.21
c	0. ) 0	0.70
D	20.70	21.30
D1	16.2 )	16.8 )
E	1 ) . ) 0	16.10
E1	13.00	13.60
E2	4.80	) .20
E3	2.30	2.70
e	10.88 TYP	
L	1 - .62	20.22
L1	-	4.30
¶ 3		
¶ 3		
6	7 < 3	

' # ( ' .



**Disclaimer**

The information presented in this document is for reference only. Yangn Hou Yang ^ ie Electronics Technology Co., Ltd. reserves the right to make changes without notice for the specification of the products displayed herein to improve reliability, functionality, design or otherwise.

The product listed herein is designed to be used with ordinary electronic equipment or devices and not designed to be used with equipment or devices which require high level of reliability, a malfunction of which would directly endanger human life (such as medical instruments, transportation equipment, aerospace machinery, nuclear-reactor controllers, fuel controllers and other safety devices). Yang ^ ie or anyone on its behalf assumes no responsibility or liability for any damages resulting from such improper use of sale.

This publication supersedes and replaces all information previously supplied. For additional information, please visit our website <http://www.21yang^ie.com> or consult your nearest Yang ^ ie's sales office for assistance.