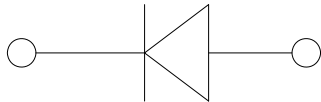


Plastic High Voltage Rectifier



Features

- VR 2KV
- IO 0.5A
- Glass passivated chip junction
- High surge current capability



PARAMETER	SYMBOL	UNIT	EM520
Device marking code			EM520
Maximum Repetitive peak reverse voltage	VRRM	V	2000
Maximum RMS Voltage	VRMS	V	1400
Maximum DC Blocking Voltage	VDC	V	2000
Average Forward Current @60Hz sine wave, Resistance load, Ta =90	$I_{F(AV)}$	A	0.5
Forward Surge Current (Non-repetitive) @60Hz Half-sine wave, 1 cycle, Tj=25	I_{FSM}	A	20
Forward Surge Cur			-55 ~ +150

Junction Temperature	Tj		-55 ~ +150
----------------------	----	--	------------

Electrical Characteristics Ta=25 Unless otherwise specified

PARAMETER	SYMBOL	UNIT	TEST CONDITIONS	EM520
Maximum instantaneous forward voltage drop per diode	VF	V	IFM=0.5A	2
Maximum DC reverse current at rated DC blocking voltage per diode	IR	μA	Tj=25	5
			Tj=125	50

6 \$
5 HY

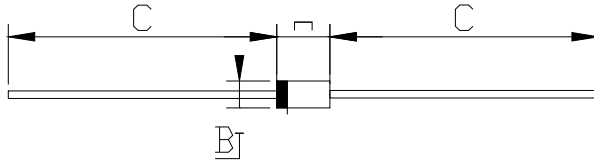
-DQ

<DQJ]KRX <DQJMEH HOKG WDRQ L&R /~~VZ~~ \DQJMLH P



Outline Dimensions

DO-204AL(DO-41)



Dimensions in millimeters

DO-204AL(DO-41)		
Dim	Min	Max
A	4.22	5.21
B	2.03	2.72
C	25.4	/
D	0.69	0.86

