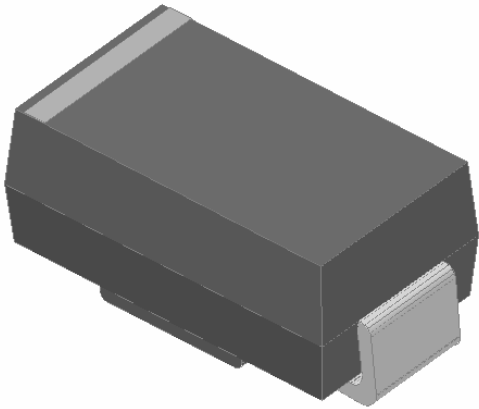
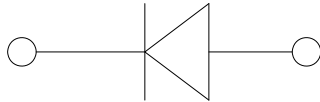


Surface Mount General Purpose Rectifier



Features

- Low profile package
- Ideal for automated placement
- Glass passivated ev



Polarity: Cathode line denotes the cathode end

Maximum Ratings (T_a=25 Unless otherwise specified)

			25
Forward Surge Current (Non-repetitive) @1ms, square wave, 1 cycle, T _j =25	I _{FSM}	A	50
Current squared time @1ms t 8.3ms T _j =25	I ² t	A ² s	2.6
Storage temperature	T _{stg}		-55 ~ +150
Junction temperature	T _j		-55 ~ +150

Electrical Characteristics T_a=25 Unless otherwise specified

PARAMETER	SYMBOL	UNIT	TEST CONDITIONS	GS1Y
Maximum instantaneous forward voltage	V _F	V	I _{FM} =1.0A	1.1
Maximum DC reverse current at rated DC blocking voltage	I _R	μA	T _j =25	5.0
			T _j =125	100
Typical junction capacitance	C _j	pF	Measured at 1MHz and Applied Reverse Voltage of 4.0 V.D.C	5.5



GS1Y

Thermal Characteristics $T_a=25$ Unless otherwise specified

PARAMETER	SYMBOL	UNIT	GS1Y
Typical Thermal Resistance	R J-A(1)	/W	75
	R J-L(1)	/W	25
	R J-C(1)	/W	15

Note

(1) Thermal resistance from junction to ambient and from junction to lead mounted on P.C.B. with 0.2" x 0.2" (5.0 mm x 5.0 mm) copper pad areas

Ordering Information (Example)

PREFERRED P/N	PACKAGE CODE	UNIT WEIGHT(g)	MINIMUM PACKAGE(pcs)	INNER BOX QUANTITY(pcs)	OUTER CARTON QUANTITY(pcs)	DELIVERY MODE
GS1Y	F1	Approximate 0.059	5000	/	80000	13" reel
GS1Y	F2	Approximate 0.059	7500	/	120000	13" reel
GS1Y	F3	Approximate 0.059	7500	/	60000	13" reel
GS1Y	F4	Approximate 0.059	1800	14400	57600	7" reel
GS1Y	F5	Approximate 0.059	2000	16000	64000	7" reel
GS1Y	F6	Approximate 0.059	5000	/	100000	13" reel

Characteristics (Typical)

FIG.1: Io-TL Cure

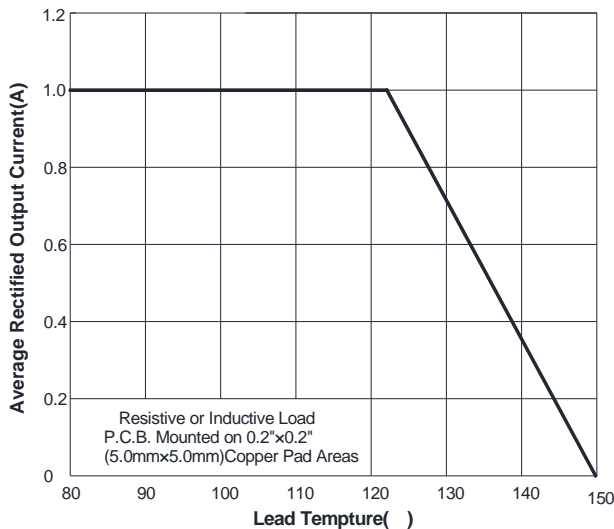
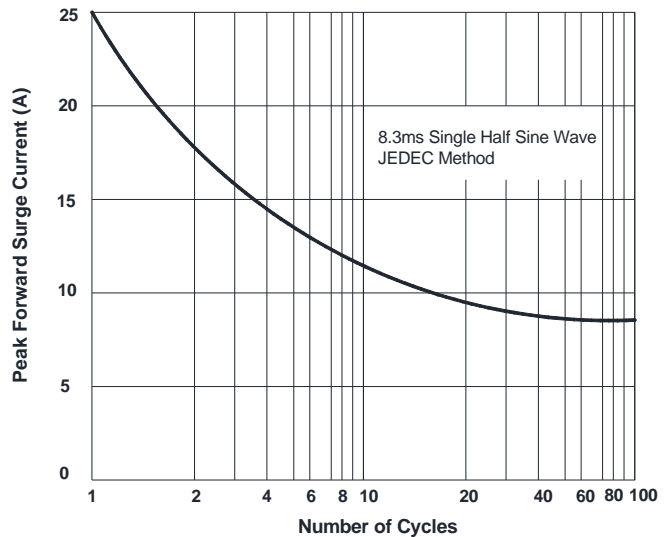


FIG.2: Forward Surge Current Capability



GS1Y



Disclaimer

The information presented in this document is for reference onl