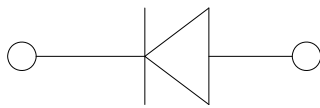
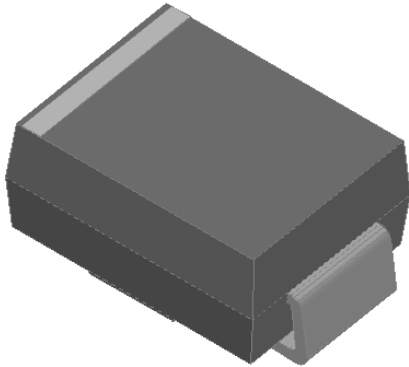


## Surface Mount Schottky Rectifier



### Features

- Low profile package
- Ideal for automated placement
- Guardring for overvoltage protection
- Low power losses, high efficiency
- High forward surge capability
- Meets MSL level 1, per J-STD-020, LF maximum peak of 260 °C

### Typical Applications

For use in low voltage high frequency inverters, freewheeling, DC/DC converters, and polarity protection applications.

### Mechanical Data

**Package:** DO-214AA (SMB)

Molding compound meets UL 94 V-0 flammability rating, RoHS-compliant, halogen-free

**Terminals:** Tin plated leads, solderable per J-STD-002 and JESD22-B102

**Polarity:** Cathode line denotes the cathode end

### Maximum Ratings (T<sub>a</sub>=25 Unless otherwise specified)

PARAMETER	SYMBOL	UNIT	SS310BA
Device marking code			SS310BA
Repetitive peak reverse voltage	V <sub>RRM</sub>	V	100
Average rectified output current @60Hz half-sine wave, 1 cycle, T <sub>a</sub> =25	I		
	F <sub>SM</sub>	A	100
Storage temperature	T <sub>stg</sub>		-55 ~+150
Junction temperature	T <sub>j</sub>		-55 ~+150

### Electrical Characteristics T<sub>a</sub>=25 Unless otherwise specified

PARAMETER	SYMBOL	UNIT	TEST CONDITIONS	SS310BA
Maximum instantaneous forward voltage drop per diode	V <sub>F</sub>	V	I <sub>FM</sub> =3.0A	0.85
Maximum DC reverse current at rated DC blocking voltage per diode @ V <sub>RM</sub> =V <sub>RRM</sub>	I <sub>RRM</sub>	mA	T <sub>a</sub> =25	0.10
			T <sub>a</sub> =100	10

Note1:Pulse test:300uS pulse width,1% duty cycle

Note2:Pulse test:pulse width 40mS



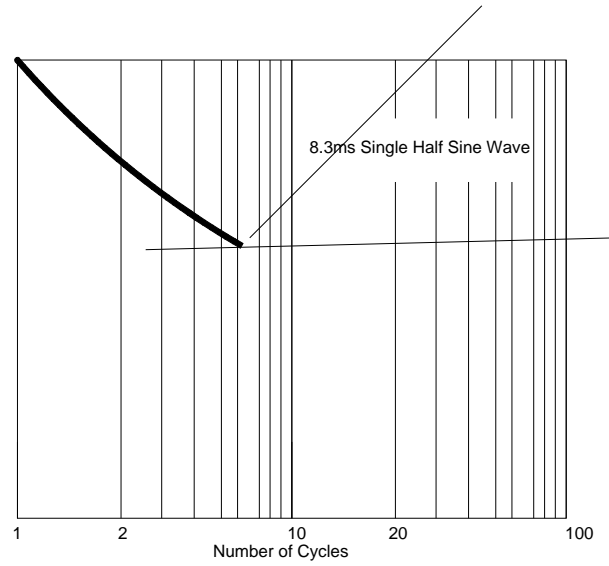
# SS310BA

## Thermal Characteristics $T_a=25$ Unless otherwise specified

PARAMETER	SYMBOL	UNIT	SS310BA
Thermal resistance	$R_{J-A}$	/W	55 <sup>(1)</sup>
	$R_{J-C}$		20 <sup>(1)</sup>

Note:  
(1) Thermal resistance from junction to ambient and from junction to lead mounted on P.C.B. with 0.6" x 0.6" (16 mm x 16mm) copper pad areas

### Characteristics(Typical)





**Ordering Information (Example)**

PREFERRED P/N	PACKING
---------------	---------



**Disclaimer**

1