

# Test Report

No.: CANEC25030712727

Date: Dec 17, 2025

Page 1 of 7

Client Name: YANGZHOU YANGJIE ELECTRONIC TECHNOLOGY CO.,LTD

Client Address: NO.6 WEST HEYE ROAD, HANJIANG DISTRICT, YANGZHOU, JIANGSU, CHINA

Sample Name: Glass Case Diode

Client Ref. Information: Glass Tube

The above sample(s) and information were provided by the client.

SGS Job No.: GZP25-034879

Reference No.: SHP25-041836

Sample Receiving Date: Dec 09, 2025

Testing Period: Dec 09, 2025 ~ Dec 16, 2025

Test Requested: Select test(s) as requested by the client.

Test Method(s): Please refer to next page(s).

Test Result(s): Please refer to next page(s).

Test Requirement	Conclusion
EU RoHS Directive (EU) 2015/863 amending Annex II to Directive 2011/65/EU - Lead, Mercury, Cadmium, Hexavalent chromium, Polybrominated biphenyls (PBB), Polybrominated diphenyl ethers (PBDE), Bis(2-ethylhexyl) phthalate (DEHP), Butyl benzyl phthalate (BBP), Dibutyl phthalate (DBP) and Diisobutyl phthalate (DIBP)	Pass

Signed for and on behalf of  
SGS-CSTC Standards Technical Services Co., Ltd. Guangzhou Branch



Violet Shi  
Approved Signatory

Scan to see the report.



# Test Report

No.: CANEC25030712727

Date: Dec 17, 2025

Page 2 of 7

## Test Result(s):

### Test Part Description

SN ID	Sample No.	SGS Sample ID	Description
SN1	A57	CAN25-0307127-0001.C057	Multi-color solid

### Remarks:

- (1) 1 mg/kg = 1 ppm = 0.0001%
- (2) MDL = Method Detection Limit
- (3) ND = Not Detected (< MDL)
- (4) "-" = Not Regulated

**EU RoHS Directive (EU) 2015/863 amending Annex II to Directive 2011/65/EU - Lead, Mercury, Cadmium, Hexavalent chromium, Polybrominated biphenyls (PBB), Polybrominated diphenyl ethers (PBDE), Bis(2-ethylhexyl) phthalate (DEHP), Butyl benzyl phthalate (BBP), Dibutyl phthalate (DBP) and Diisobutyl phthalate (DIBP)**

**Test Method:** With reference to IEC 62321-4:2013+AMD1:2017, IEC 62321-5:2013, IEC 62321-7-2:2017 and IEC 62321-12:2023, analysis was performed by ICP-OES/AAS, UV-Vis and GC-MS.

Test Item(s)	Limit	Unit(s)	MDL	A57
Lead (Pb)	1000	mg/kg	2	193149
Mercury (Hg)	1000	mg/kg	2	ND
Cadmium (Cd)	100	mg/kg	2	ND
Hexavalent Chromium (Cr(VI))	1000	mg/kg	8	ND
Polybrominated biphenyls (PBB)	1000	mg/kg	-	ND
Monobrominated biphenyl (MonoBB)	-	mg/kg	25	ND
Dibrominated biphenyl (DiBB)	-	mg/kg	25	ND
Tribrominated biphenyl (TriBB)	-	mg/kg	25	ND
Tetrabrominated biphenyl (TetraBB)	-	mg/kg	25	ND
Pentabrominated biphenyl (PentaBB)	-	mg/kg	25	ND
Hexabrominated biphenyl (HexaBB)	-	mg/kg	25	ND
Heptabrominated biphenyl (HeptaBB)	-	mg/kg	25	ND
Octabrominated biphenyl (OctaBB)	-	mg/kg	25	ND
Nonabrominated biphenyl (NonaBB)	-	mg/kg	25	ND
Decabrominated biphenyl (DecaBB)	-	mg/kg	25	ND
Polybrominated diphenyl ethers (PBDE)	1000	mg/kg	-	ND
Monobrominated diphenyl ether (MonoBDE)	-	mg/kg	25	ND
Dibrominated diphenyl ether (DiBDE)	-	mg/kg	25	ND
Tribrominated diphenyl ether (TriBDE)	-	mg/kg	25	ND
Tetrabrominated diphenyl ether (TetraBDE)	-	mg/kg	25	ND
Pentabrominated diphenyl ether (PentaBDE)	-	mg/kg	25	ND
Hexabrominated diphenyl ether (HexaBDE)	-	mg/kg	25	ND
Heptabrominated diphenyl ether (HeptaBDE)	-	mg/kg	25	ND

# Test Report

No.: CANEC25030712727

Date: Dec 17, 2025

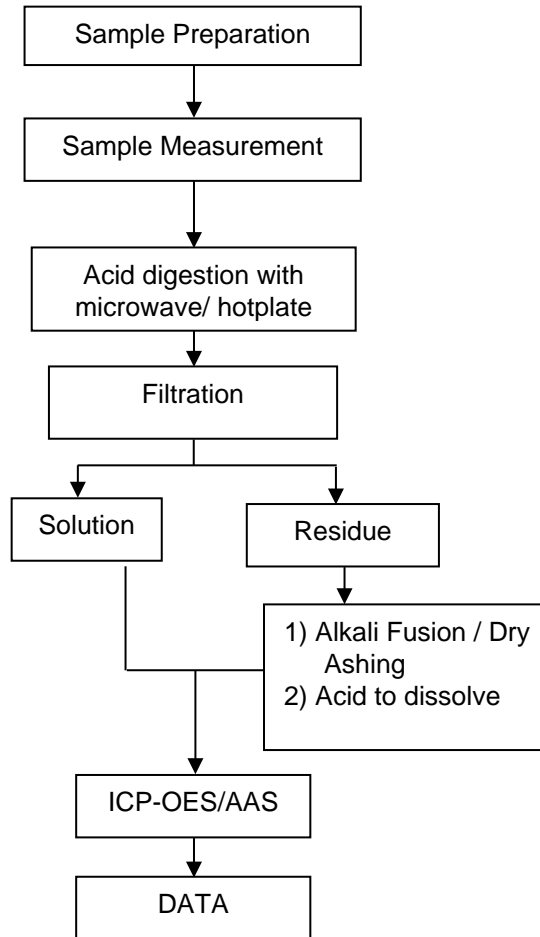
Page 3 of 7

Test Item(s)	Limit	Unit(s)	MDL	A57
Octabrominated diphenyl ether (OctaBDE)	-	mg/kg	25	ND
Nonabrominated diphenyl ether (NonaBDE)	-	mg/kg	25	ND
Decabrominated diphenyl ether (DecaBDE)	-	mg/kg	25	ND
Bis(2-ethylhexyl) phthalate (DEHP)	1000	mg/kg	50	ND
Butyl benzyl phthalate (BBP)	1000	mg/kg	50	ND
Dibutyl Phthalate (DBP)	1000	mg/kg	50	ND
Diisobutyl Phthalate (DIBP)	1000	mg/kg	50	ND

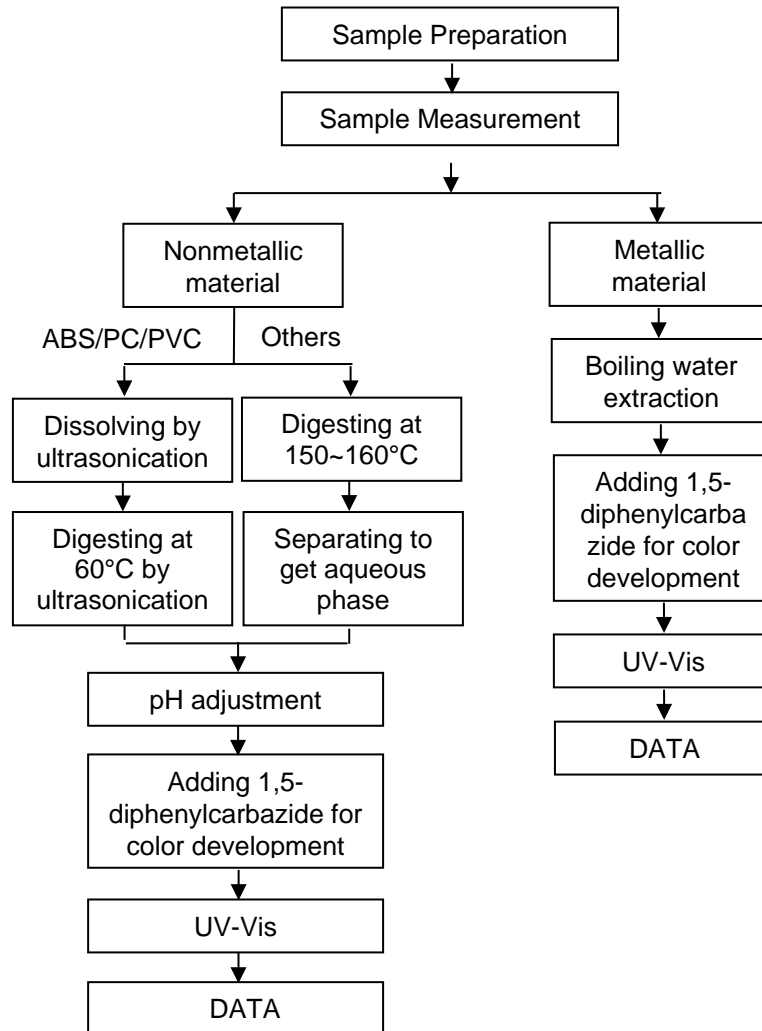


**Elements Testing Flow Chart**

These samples were dissolved totally by pre-conditioning method according to below flow chart.



Hexavalent Chromium (Cr(VI)) Testing Flow Chart



**Test Report**  
**ATTACHMENTS**

**No.:** CANEC25030712727

**Date:** Dec 17, 2025

Page 6 of 7

**PBB(s)/PBDE(s)/Phthalates Testing Flow Chart**

Partial red stamp on the right edge of the page, containing some illegible characters and the word "ices".

Partial red stamp at the bottom left, containing the Chinese characters "如有用".

Unless otherwise agreed in writing, this document is issued by the Company subject to its General Conditions of Service printed overleaf available as requested or accessible at <https://www.cpsc.com/eng/TermsandConditions>. Attention is drawn to the limits





**Test Report**

**No.:** CANEC25030712727

**Date:** Dec 17, 2025

Page 7 of 7

「UNIVERSITY」

「UNIVERSITY」

Unless otherwise agreed in writing, this document is issued by the Company subject to its General Conditions of Service printed overleaf available as requested or accessible at <https://www.cnc.com.cn/Terms-and-Conditions>. Attention is drawn to the limits

